



2023
STUDENT HANDBOOK
& CATALOG

Welcome to Cherry Hill Seminary!

Amidst news that growing numbers claim no religious affiliation and congregations are struggling to keep their doors open, we find that now, more than ever before, Paganism and the many forms of Nature spiritualities offer spiritual sustenance. Some seek healing or solace, some call for justice, and many look for celebration of life and its myriad passages. Some see the growth of Pagan and Nature spiritualities as hope for the earth, herself. Many look to the eclectic and diverse nature of Paganism as a positive model for the burgeoning globalization of society.

Whatever we seek as spiritual sojourners, we are all still human — we need support during life's painful transitions, community allies when we answer the call to effect social change, assistance with crisis, companionship as we pursue the path of transformation. And we are the most curious of creatures on the planet, ever and always wanting to know more, understand better, see further.

The Cherry Hill Seminary community is poised to address the needs presented by our constantly changing communities, including the spiritually-independent, the "spiritual-but-not-religious," and the spiritually-fluid. We have assembled the finest faculty available, rivaled closely by the caliber of our students, and we continue to develop unique programming.

March 2023 marks the end of Cherry Hill Seminary's sixteenth year as a public nonprofit educational institution (and going on twenty years since our founding as a private teaching effort). It has been my honor to serve as director since January 2008. Like a garden, we have flourished in the fertile soil found among those who hunger for knowledge. Nowhere else can one find Cherry Hill Seminary's unique blend of reasoned inquiry, educational resources and nurturing relationships in a learning community.

Cherry Hill Seminary is deepening its roots, and our ever-spreading branches offer a unique kind shade and sustenance.

You are warmly invited to be part of this dynamic learning community, as a student, as a volunteer, as a donor member of The Hypatia Society, or in a way we've not yet thought of. In your own way, be part of Cherry Hill Seminary as we step across our own threshold of change.

Yours in changing times,

Holli S. Emore, M.Div.
Executive Director

March 2, 2023 update

Notices About This Student Handbook & Catalog

This handbook contains information effective January 1, 2023. All previous handbooks (sometimes called catalog) are posted publicly on the Seminary main web site under For Students/Materials.

Cherry Hill Seminary reserves the right to add or drop programs and courses, to change fees, to change the calendar that has been published and to institute new requirements when such changes are necessary. Every effort will be made to minimize the inconvenience such changes may create for students. Suitable substitutions will be allowed for required courses that have been withdrawn.

All general information about Cherry Hill Seminary is found in this handbook, including official policies, procedures, fees, programs, courses, and grading and conduct expectations.

All students are encouraged to review the handbook from the time you decide to apply for admission. You should also review the School Performance Fact Sheet provided during the admissions process.

All Seminary instruction is provided through online distance education technologies (not a physical campus). While you are welcome to schedule a visit to our South Carolina office, we do not occupy a physical academic campus. Periodic conferences, symposia and student intensives are held in various locations in the United States; recommended hotel accommodations are included in announcements for such events. During the pandemic, we have suspended site-based events, but hope to hold a virtual intensive this year.

Cherry Hill Seminary requires students to have access to a reliable (preferably high-speed) internet connection. The Seminary is not liable for interruptions in service or failure of its web site and online classroom platform.

The Seminary has no debts, no record of bankruptcy or petitions for bankruptcy, and no legal claims against it. The Seminary strives to be transparent, accurate and accountable in all communications, including students, donors, the public and any others. Anyone may file a complaint against the Seminary by contacting the South Carolina Commission on Higher Education at 803-737-2260, or www.che.sc.gov.

The South Carolina Commission on Higher Education is the licensing authority for private postsecondary education under the provisions of the Nonpublic Postsecondary Institution License Act, Chapter 58 of Title 59, South Carolina Code of Laws, Section 59-58-30, 2(a). Under this statute, as a religious school Cherry Hill Seminary is currently exempt from state regulation.

Cherry Hill Seminary is a registered nonprofit organization with the State of South Carolina and is a registered nonprofit under the Internal Revenue Service code 501-c-3. All annual filings are available upon request to the Seminary office or by visiting Guidestar.org.

© 2023 Cherry Hill Seminary v.1-05-2023

Welcome to Cherry Hill Seminary!	2
Notices About This Student Handbook & Catalog	4
Introduction to Cherry Hill Seminary	8
Our Mission	8
Our Vision	8
Our Values	8
Our History	8
Guardian Ancestor	8
Governance	8
2023 Board of Directors	8
Administration and Staff	9
Advisory Council	9
Business Address and Hours of Operation	9
Organization	10
Academic Affairs	10
Academic Departments	10
Faculty Leadership	10
Contact Information	11
Major Areas of Study	11
Ministry, Advocacy and Leadership	11
Theology and Religious History	13
Community Ministry Certificate	13
Insights Courses	15
Conferences and Lectures	16
Pagan Life Academy	16
Graduate Programs	16
Master of Divinity Ministry, Advocacy & Leadership	17
Master of Divinity Pastoral Counseling & Chaplaincy	18
Master of Divinity Theology & Religious History	19
Master of Pagan Studies	20
Community Ministry Certificate	21
Spiritual Direction Certificate	22
Additional Academic Requirement Information	27
Academic Intensive	27
Capstone Project (formerly Praxis)	27
Master's Thesis or Project	27
Internships and Field Experience	27
Capstone Project (formerly Praxis)	29
Master's Thesis or Project	29
Internship or Supervised Residency	31
Admissions	33
Application to a Degree Program	33
Application to the Community Ministry Certificate	34
Transcript Policy	34
GRE or MAT Testing	34
Personal Essay	34
Letter of Professional Recommendation	35

Letter of Personal Recommendation.....	35
Admissions Process.....	35
Exceptional Situations.....	35
Conditional Admission	36
Postponement and Readmission.....	36
Transfer Credits Policy	36
Matriculation Policies	37
Cohort	37
Continuous Enrollment Policy	38
Leave of Absence from a Certificate or Degree Program	38
Medical Leave of Absence from Program	38
Withdrawal from a Program	38
Changes in Programs, Courses, or Semesters	38
Registration	39
Course Audit.....	39
Adding, Dropping, or Withdrawing from a Class.....	39
Past Courses Taken at Cherry Hill Seminary.....	39
Financial Information	40
Tuition and Fees	40
Current tuition rates are as follows:.....	40
Refunds	40
Grading and Evaluation	40
Grading	40
Mid-Program Advising	43
About Ordination and Licensure	43
Academic Honors.....	43
Mentorship Program	43
Other Requirements and Resources	44
Technical Competency and Preparedness.....	44
Using Web-Based Meeting Platforms.....	44
Online Classroom.....	45
About Class Format	45
Library Resources	46
Student Services	46
Chaplain Services for Our Students.....	46
Advisement	46
Graduation	47
Certificate Award	47
Additional.....	47
Student Identification Card	47
Academic Calendar	47
Accessibility.....	48
Record Storage	48
Transcript Requests	48
Grievances.....	48
Additional Policies	49
Academic Honesty and Student Conduct	51
Definitions	54

Prohibited Conduct.....	54
Procedures	54
Additional.....	55
Course Catalog	56
Course Codes.....	56
Credit Hours	56
Required Core Courses	57
Ministry, Advocacy and Leadership Courses.....	59
Pastoral Counseling and Chaplaincy Courses.....	63
Theology and Religious History Courses.....	69
A Final Word.....	72
Appendix A: Policies	73
Appendix B: Student Forms	82
Apply To a Degree or Certificate Program	83
Register as a Non-Degree Student.....	86
Appendix C: The Master’s Thesis at Cherry Hill Seminary	93

Introduction to Cherry Hill Seminary

Cherry Hill Seminary trains individuals to do the work of professional ministry grounded in Pagan and related nature-based spiritualities. We offer a Master of Divinity (M.Div.) and Master of Pagan Studies, as well as enrichment (Insights) classes for those not seeking a degree, and a non-professional mentored program of study (Community Ministry Certificate).

Our Mission

Cherry Hill Seminary empowers spiritual leadership, scholarship, and ethics through theological and pastoral education to nurture interfaith engagement in a diverse society.

Our Vision

Our Values

To live our Mission we:

- Honor the Sacredness of the Earth
- Embrace Diversity
- Value Scholarship
- Advocate Service to Our Communities
- Diversity of Spiritual Expression in Pagan and Nature Spiritualities

Our History

The seed that became Cherry Hill Seminary was planted in the early 1990s by a group of Vermont Pagans. Classes were conducted first by mail, and then brought online in 2000. The Seminary was granted 501(c)3 tax-exempt status by the Internal Revenue Service in March of 2007. Business operations were moved to South Carolina in 2008, and the first master's program was announced in July 2009. By January 2022 we will have awarded six Master of Divinity degrees, fifteen Community Ministry Certificates, and numerous former certificates; hundreds have taken one or more courses.

Guardian Ancestor

Cherry Hill Seminary honors Hypatia of Alexandria, a woman of extraordinary accomplishments who was martyred in 415 CE, as we pursue our vision of providing professional Pagan ministry education. Hypatia was ritually installed in June 2004 as Guardian Ancestor using the formal name Despoina Hypatia Polumathes. *Despoina* is "Lady, Mistress"; *Polumathes* means "much learned." Visit "About CHS" on our web site to read more about Hypatia.

Governance

Cherry Hill Seminary is a 501(c)3 nonprofit public charity incorporated in the state of South Carolina, in the United States. As such, it is governed by a volunteer board of directors. As the chief governing body of Cherry Hill Seminary, the board of directors delegates management authority to the executive director in accord with its policies. The executive director is responsible for management of staff, outlined in the Cherry Hill Seminary Organizational Chart.

2023 Board of Directors

Sara Blackwelder, Treasurer, Denver, CO
Diane Cacciato, Duncan, British Columbia
Laurel Holmstrom-Keyes, Cloverdale, CA
Jeffrey Keefer, President, New York City, NY
Margaret Meggs, Havre, MT
Ron Schaefer, Floresville, TX
James Taylor, Bluffton, SC

Administration and Staff

Holli S. Emore, M.Div., Executive Director
Margo Wolfe, Ph.D., Academic Dean
Erika Patterson, Ph.D., Dean of Students
Dana Doerksen, MLIS, Librarian
Tracie Mooneyham, Marketing Coordinator

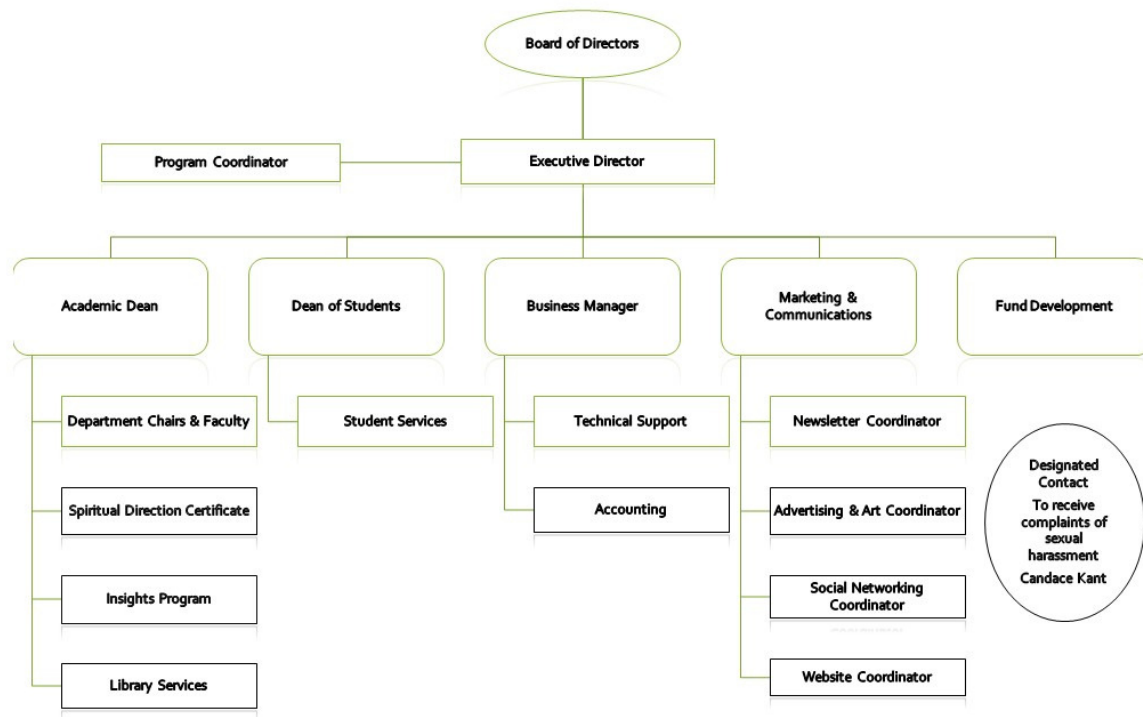
Advisory Council

Phyllis Curott, J.D.
Ronald Hutton, Ph.D.
Michael McDermott, M.D.
Aline O'Brien
Michael C. Owens, J.D.
Michael York, Ph.D.
Bios are available in the Appendix.

Business Address and Hours of Operation

Seminary staff work from home offices in several cities around the United States. In the future, we anticipate opening a business office in Columbia, South Carolina, where we are presently incorporated, and where our executive director lives. For this reason, staff are more accessible than if they were limited by restricted office hours. Staff are in several time zones, and frequently check messages or otherwise communicate at varying times. Messages left on our toll-free phone system (1-888-503-4131), or email sent to staff, will normally receive a response within 24-48 hours, and most often, much sooner. Visit the virtual Seminary at www.cherryhillseminary.org.

Organization



Academic Affairs

Academic Affairs at Cherry Hill Seminary consists of the academic departments listed below, and several supporting offices and services. The Academic Dean oversees all aspects of academic affairs, providing administrative oversight and academic leadership. The Academic Dean works closely with and answers directly to the executive director. Major responsibilities related to academic affairs include academic planning, programs, and support services; academic policy; academic services; budgets; faculty affairs, governance, appointments, and advancements; and assisting with production of this handbook. Academic affairs aids both students and faculty in achieving their academic and professional goals. Cherry Hill Seminary is currently unaccredited by an outside accrediting body.

Academic Departments

Ministry, Advocacy and Leadership
Pastoral Counseling and Chaplaincy
Theology and Religious History

Faculty Leadership

Seminary department chairs serve on a revolving basis and are appointed by the Academic Dean from their respective departments. Serving at this time are:

Department of Ministry, Advocacy and Leadership, Deirdre Sommerlad-Rogers, Ph.D.
Department of Pastoral Counseling and Chaplaincy, David L. Oringderff, Ph.D.
Department of Theology and Religious History, Candace Kant, Ph.D.

Contact Information

Cherry Hill Seminary
P.O. Box 212804
Columbia, SC 29221
CHS@cherryhillseminary.org
www.cherryhillseminary.org

Email is the preferred method for contacting the Cherry Hill Seminary office. If you need to call, note that our phone number (803-862-9088) is forwarded to voice mail. While the staff strives to respond to messages as quickly as possible, we may be unable to respond for up to 1 business day.

Major Areas of Study

Each of three major areas of graduate study is associated with an academic department at Cherry Hill Seminary:

Ministry, Advocacy and Leadership
Pastoral Counseling and Chaplaincy
Theology and Religious History

Students admitted to Master of Pagan Studies and Master of Divinity programs will choose Ministry, Advocacy and Leadership, or Theology and Religious Studies, as a major. The Pastoral Counseling and Chaplaincy Department has different, program-specific, requirements. These students do not select an additional major or track. Students are advised to contact the chair of the department with questions about program and course information.

Ministry, Advocacy and Leadership

72 hours and 3.0 GPA

Ministry of all forms also requires leadership and advocacy in order to support whole persons and communities. Students in the Department of Ministry, Advocacy and Leadership will pursue studies in ethics, religious history, basic pastoral care, ritual arts, religious leadership, interfaith relations, public communications, and activism-advocacy.

Program Outcomes

Upon graduation, students in the Ministry, Advocacy & Leadership concentration will be able to:

1. Define a personal theology of ministry, in the overlapping contexts of Pagan communities and the larger human communities.

2. Demonstrate competency engaging historic and current social justice issues that affect both the Pagan communities and human beings in general through their specific expressions of ministry, leadership or organizational advocacy.
3. Identify models of leadership that constructively engage ministry and advocacy issues significant to Pagan and larger human communities with a focus on the model that seems most fitting to the student's ministry/leadership goals.
4. Construct portfolios, rituals, ministry plans, or other organizational projects with demonstrate the student's ability to integrate academic, social, public, and religious resources for a targeted ministry audience.

Pastoral Counseling and Chaplaincy 93 hours and a 3.0 GPA

The Department of Pastoral Counseling and Chaplaincy educates students in approaches that integrate pastoral counseling and chaplaincy studies with broad spiritual and scientific dimensions, giving a foundation in professional pastoral counseling theories consistent with current standards of excellence and research, as well as foundations in the specialized ministry of chaplaincy. Students explore how they, as practitioners of Pagan spiritual traditions, serve Pagans and non-Pagans alike through services on parity with those professionals of other faith groups. We offer the education needed by those who aspire to be leaders with a global outreach in the pastoral counseling and chaplaincy professions. Courses from each of the other departments enable students to explore a range of topics related to advocacy, ministry, theology and history.

The Pastoral Counseling and Chaplaincy Department degrees meet basic educational and professional standards for students who plan to work in various counseling settings, and for those who plan to work in the professional chaplaincies. No institution or professional organization (i.e., APA, ACA, APC, etc.) grants licensure to practice in a regulated profession. Licensure authority is solely under the purview of the state (or other governing body) in which the regulated profession is practiced. Students seeking licensure are advised to consult the state regulating authority in which they plan to practice counseling, pastoral counseling or work as a professional chaplain. Professional counseling is regulated in all states; pastoral counselors and chaplains may or may not fall under the oversight or regulation of a given state.

Program Outcomes

Upon graduation, students will be able to:

1. Define and explain the theory and practice of professional chaplaincy as a specialized ministry.
2. Articulate the principles of pastoral counseling and chaplaincy in a variety of pluralistic and culturally diverse settings.
3. Demonstrate an understanding of sacred texts in terms of both historic and contemporary relevance.
4. Articulate a basic awareness of the range of faith practices and traditions and demonstrate the ability to engage in meaningful dialogue across faith traditions.
5. Critically examine historical and contemporary theological expression and define a personal position through theological reflection.
6. Conduct original relevant research using primary and secondary source materials.

Theology and Religious History

72 credit hours and 3.0 GPA

The Department of Theology and Religious History offers students a unique opportunity to study theology, history and practice from a contemporary Pagan perspective.

Program Outcomes

Upon graduation, students in the Theology & Religious History concentration will be able to:

1. Define personal theological positions using scholarly terms and contextualize within broader themes in contemporary Pagan theology.
2. Critically examine current intellectual debates in contemporary Paganism, particularly those related to defining the movement.
3. Compare and contrast contemporary Paganism with other religious traditions and spiritualities.
4. Conduct research using primary and secondary source materials through multiple scholarly methodologies.
5. Demonstrate a critical awareness of how multiple intersectionalities impact Pagan theology and practice.

Community Ministry Certificate

The Community Ministry Certificate (CMC) is program of guided independent study designed especially for individuals ready to embark on a 15-month mentored learning experience which may result in optional ordination or credentialing by a specific tradition-organization. Students 18 and older need not have a college degree or previous experience but should be committed to learning which is foundational to serving one's local or regional community spiritual needs.

CMC Program Outcomes

Module 1: What Is Paganism
<ol style="list-style-type: none">a. Describe the rise of contemporary Pagan movements, including the distinction between pre-monotheistic paganism and today's traditions.b. Understand basic common Pagan concepts, e.g., elements, seasonal observances, animism, magic, shamanism.c. Explore at least three Pagan traditions with which the student was previously unfamiliar.d. Develop awareness of the range of contemporary Pagan practice worldwide.
Module 2: Ethics & Personal Development
<ol style="list-style-type: none">a. Understand the concept of ethics and how it is different from morality.b. Distinguish problematic religious community behavior.c. Explore ways of nurturing regular personal spiritual practice.d. Articulate a personal ethical code congruent with personal theology.
Module 3: Diversity & Culture; Sexuality
<ol style="list-style-type: none">a. Examine the multiple aspects of diversity in contemporary society.

<ul style="list-style-type: none"> b. Learn about privilege, cultural competency, and cultural appropriation. c. Review concepts of gender identity, and sexual orientation and expression. d. Demonstrate respect for those who differ from the student in various aspects of diversity, ability, and religion.
Module 4: Community Ministry I
<ul style="list-style-type: none"> a. Distinguish between chaplaincy and sectarian ministry. b. Prepare to offer basic spiritual support in a community setting. c. Understand clergy response to child abuse and neglect. d. Appreciate and embrace the value of religious diversity. e. Understand basics of interfaith work, including interfaith dialogue and peace-building.
Module 5: Life Stages Ministry I: Birth to Young Adult
<ul style="list-style-type: none"> a. Analyze some models of spiritual development. b. Learn active listening skills and basic spiritual assessment. c. Identify spiritual needs for prenatal, birth, childhood, adolescent and young adults stages. d. Consider ways to support families with spiritual needs related to children and adolescents.
Module 6: Rituals I
<ul style="list-style-type: none"> a. Examine why humans perform ritual and what some scholars think it means. b. Survey types of ritual and common patterns. c. Review the variety of ritual around the world and through history. d. Consider the role of ritual for contemporary Pagan, interfaith, spiritual-but-not-religious and other emerging spiritual contexts.
Module 7: Rituals II
<ul style="list-style-type: none"> a. Learn basic contemporary Pagan ritual format, including common mythical themes, moving energy, elemental correspondences, and ritual techniques. b. Demonstrate ability to create rituals appropriate to personal theology and practice. c. Research and understand state requirements for performing marriage. d. Learn how to enrich any ritual using the arts and multisensory aspects. e. Learn how to critique and improve ritual. e. Create a personal book of ritual that includes short blessings or prayers.
Module 8: Community Ministry II
<ul style="list-style-type: none"> a. Examine the relationship of self-awareness to leadership ability. b. Learn non-anxious presence and other basic leadership skills. c. Survey some models of group dynamics. d. Reflect on personal tendencies when in group settings.
Module 9: Pastoral Care I: Families & Relationships
<ul style="list-style-type: none"> a. Learn about basic family systems theory. b. Practice how to evaluate and create a hypothetical plan of spiritual care. c. Know the signs of abuse and appropriate ways to respond, when to refer, when to report, and when to intervene. d. Identify local referral sources and sets up a personal file for future reference.

Module 10: Life Stages Ministry II: Adult to End of Life
<ul style="list-style-type: none"> a. Learn about spiritual emergencies and how to respond. b. Research local statutes for mandated reporting and clarify the clergy role. c. Understand the effects of grief and how to support the grieving. d. Identify spiritual needs for adulthood, marriage, end-of-relationship, illness, aging and death.
Module 11: My Personal Theology
<ul style="list-style-type: none"> a. Demonstrate familiarity with theological concepts. b. Reflect on personal theological assumptions and personal spiritual experiences. c. Apply personal theology to everyday life situations. d. Write a personal theology which addresses human nature, divinity, good-evil, personal practice.
Module 12: Pastoral Care II: Mental Health & Addictions
<ul style="list-style-type: none"> a. Understand basics of mental health, how mental illness may manifest. b. Recognize signs of depression and risk of suicide. c. Recognize symptoms of addiction and appropriate responses. d. Identify local referral sources and sets up personal file for future reference.
Module 13: Community Ministry III
<ul style="list-style-type: none"> a. Understand basic effective public speaking. b. Demonstrate how to create a workshop or class. c. Affirm the ethical and leadership responsibilities of a teacher. d. Identify other individuals and organizations with whom student may be able to collaborate in the future.
Module 14: Lifework I
<ul style="list-style-type: none"> a. Understand foundational tenets of tradition. b. Review and comprehend tradition-specific teachings. c. Understand tradition organizational structure and tradition group guidelines/protocols. d. Familiar with tradition leadership.
Module 15: Lifework II
<ul style="list-style-type: none"> a. Understand tradition expectations of clergy. b. Understand tradition ceremony practices and expectations. c. Prepared to transmit tradition teaching to others. d. Committed to both personal and tradition ethical codes. e. Research and understand local statutes for performing marriage.

Insights Courses

Insights are short courses (usually four weeks) with a narrow focus on a specific topic. All Insights courses

are available to the general public without application for admission to Cherry Hill Seminary.

Some Insights courses will address a practical skill or special topic needed by many in the Pagan community. Master's students who have not recently been engaged in academic study might choose an Insights course to refresh their research and writing skills. Some Insights courses may be offered as prerequisites to another class.

If you are not a current Seminary student, you may simply register and pay the tuition. A link to the online registration form for non-degree-seeking students is posted on our web site (under Educational Programs-Admissions). Insights courses do not earn any credit towards a degree. Only where specifically noted do Insights courses earn units towards a certificate.

Conferences and Lectures

Cherry Hill Seminary occasionally presents site-based conferences which are open to both students and the public. Online lectures by noted guests are also offered from time to time, open to both students and the public. Neither conferences nor lectures alone earn academic (master's) credit (unless otherwise indicated) but may satisfy a requirement within a particular class or for a certificate. Both conferences and lectures may earn unit hours towards some certificates; read certificate requirements for more detail. All conferences and lectures are announced publicly and posted on the main web site. During the pandemic, we have suspended site-based events, but hope to hold a virtual intensive this year.

Pagan Life Academy

Explore the wheel of the year through this printed lesson series of eight myths, with study questions and rituals created especially for Pagan inmates, chaplains, and prison volunteers. Each is drawn from a different Pagan source, including Greek, Egyptian, Indigenous traditions, Norse, Irish, and Roman. Pagan Life Academy lessons each focus on a character-building virtue, all of which create a foundation for transformed living.

- A story from mythology
- A ritual for one holiday
- Some questions to think about and answer
- Basic instructions for holding a ritual
- Poetry and words to chants written for the lesson
- A chart of nature, color, and spiritual correspondences

Graduate Programs

Cherry Hill Seminary programs are designed to meet the needs of working adults living in a complex and demanding world. Because instruction is primarily through distance education, students have more flexibility in the specific hours each week they need to reserve for study. With no need for daily travel to classes, Seminary classes are both environmentally sound and time efficient.

Each degree has specific requirements for face-to-face academic intensive sessions, held in various retreat locations. A student can expect to travel to a four-day or longer event twice before graduation with a master's degree. During the pandemic, we have suspended site-based events, but hope to hold a virtual intensive this year. Some degrees require practicums or internships which must be done locally, with both local and Seminary supervision.

All degree programs require the following core curriculum classes, which must be completed within the

first two years of coursework:

C5101 Ethics & Boundaries
C5121 Contemporary Global Paganisms
C5131 Spiritual Formation: Soul Work
C5141 Pagan Theology
C5151 Research Design and Methodology
C5161 Interfaith Leadership

Master of Divinity | Ministry, Advocacy & Leadership

General Requirements: 72 hours and a minimum 3.0 GPA

The basic professional degree for the work of clergy supported by academic studies, a Master of Divinity degree requires the equivalent of three years of full-time study, 72 credit hours, and is considered a "terminal degree." Ordination by one's specific group or tradition, in addition to the degree, may be required for endorsement or employment. (Cherry Hill Seminary does not ordain clergy.)

Core Course Group (18 credit hours):

C5101 Ethics and Boundaries
C5121 Contemporary Global Paganisms
C5131 Spiritual Formation: Soul Work
C5141 Pagan Theology
C5151 Research Design & Methodology
C5161 Interfaith Leadership

MAL Course Group I, Theology and Religious History (TRH) (3 credit hours):

T5301 Understanding Ritual Experience

MAL Course Group IA, Theology and Religious History (TRH) (6 credit hours):

Any other two (2) courses from TRH

MAL Course Group II, Pastoral Counseling and Chaplaincy (PCC) (6 credit hours):

P5102 Pastoral Counseling
P6207 Psychology of Religion and Paganism

MAL Course Group IIA, Pastoral Counseling and Chaplaincy (PCC) (3 credit hours):

One (1) additional course in PCC

MAL Course Group III, Ministry, Advocacy and Leadership (MAL) (9 credit hours):

M5325 Liturgical Design: Beyond the Wheel of the Year
M5560 Leadership I
M5900 The Art and Craft of Sacred Speech: Introduction to Homiletics

MAL Course Group IV, Electives (15 credit hours):

Any five (5) additional courses from MAL, at least two of which are 6000 level or above.

MAL Course Group V, Intensives, integrative, community placement (12 credit hours):

AI1 Academic Intensive I (1 credit hour)

AI2 Academic Intensive II (1 credit hour)

M5999 Capstone Project (formerly Praxis) (1 credit hour)

M7201 Internship I (3 credit hours)

M7202 Internship II (3 credit hours)

Community placement under local supervision, in cooperation with CHS faculty and concurrent participation in CHS-based supervision group during community placement, for example, Clinical Pastoral Education OR supervised internship in an approved clinic, hospital, private therapy office or social agency office.

M7900 Master's Research Thesis OR Project Thesis (3 credit hours)

Master of Divinity | Pastoral Counseling & Chaplaincy

General Requirements: 93 hours and a 3.0 GPA

The Master of Divinity degree, Pastoral Counseling & Chaplaincy area of concentration, provides coursework and practical experience which can lead to a career as a Chaplain who also follows a Pagan spiritual path. A Master of Divinity degree requires the equivalent of three years of full-time study, 93 credit hours, and is considered a terminal degree. Ordination by one's specific group or tradition in addition to the degree may be required for endorsement or employment. (Cherry Hill Seminary does not ordain clergy.)

Core Course Group (18 credit hours):

C5101 Ethics and Boundaries

C5121 Contemporary Global Paganisms

C5131 Spiritual Formation: Soul Work

C5141 Pagan Theology

C5151 Research Design & Methodology

C5161 Interfaith Leadership

PCC Course Group I, Theology and Religious History (TRH) (9 credit hours):

Any three (3) additional courses from TRH. Strongly recommended - T5090 World Religions from a Pagan Perspective

PCC Course Group II, Pastoral Counseling and Chaplaincy (PCC) (30 credit hours):

P5102 Pastoral Counseling

P5104 Psychopathology: Creativity, Madness & the Pagan Spirit

P5105 Human Development Across the Life Span

P5106 Personality Theories

P5108 Diversity in Counseling and Advocacy

P5301 Introduction to Chaplaincy

P6101 Counseling Theories

P6201 Counseling Skills & Therapeutic Interventions

P6301 Trauma-Informed Spiritual Care and Chaplaincy

P6700 Sexuality, Culture & Religion

PCC Course Group III, Ministry, Advocacy and Leadership (MAL), (9 credit hours):

Any three (3) courses from MAL. Strongly recommended - M5100 Advocacy for Social Justice. Required M325 Liturgical Design

PCC Course Group IV, Electives (12 credit hours):

Any additional four (4) courses from the following list--

M5241 Rites of Passage

M5560 Leadership I

M6560 Leadership II

P5203 Death, Dying & Grieving: Call of the Dark Mother

P7801 Introduction to Military Chaplaincy; Military Families; War Ethics & Religion

P7802 The Experience of War; Wounded Warrior; Grief, Trauma, Loss and Recovery

P7803 Chaplaincy and Religious Freedom; Accommodation; Pluralistic Ministry

T7301 Pagan Apologetics

P6202 Group Theory and Dynamics

P6305 Transpersonal Psychology

T5560 Western Esoterism

P6203 Ministry to and for older people: Sages and Crones

Or any TRH, PCC, or MAL course with departmental approval

PCC Course Group V, Intensives, integrative, community placement (12 credit hours):

AI1 Academic Intensive 1 (1 credit hour)

AI2 Academic Intensive 2 (1 credit hour)

P5999 Capstone Project (formerly Praxis) (1 credit hour)

P7201 Community Placement I (Clinical Pastoral Education, CPE) (3 credit hours)

P7202 Community Placement Internship in either a pastoral or clinical setting. (3 credit hours)

Community placement under local supervision, in cooperation with CHS faculty and concurrent participation in CHS-based supervision group during community placement, for example, Clinical Pastoral Education OR supervised internship in an approved clinic, hospital, private therapy office or social agency office.

P7900 Master's Research Thesis OR Project Thesis (3 credit hours)

Master of Divinity | Theology & Religious History

General Requirements: 72 hours and a minimum 3.0 GPA

The basic professional degree for the work of clergy supported by academic studies, a Master of Divinity degree requires the equivalent of three years of full-time study, 72 credit hours, and is considered a "terminal degree." Ordination by one's specific group or tradition, in addition to the degree, may be required for endorsement or employment. (Cherry Hill Seminary does not ordain clergy.) The Theology & Religious History area of concentration allows the student to focus primarily on religious studies while including study in the important elements of leadership and ministry.

Core Course Group (18 credit hours):

C5101 Ethics and Boundaries

C5121 Contemporary Global Paganisms

C5131 Spiritual Formation: Soul Work

C5141 Pagan Theology

C5151 Research Design & Methodology

C5161 Interfaith Leadership

TRH Course Group I, Theology and Religious History (TRH) (3 credit hours):

T5301 Understanding Ritual Experience

TRH Course Group II, Pastoral Counseling and Chaplaincy (PCC) (9 credit hours):

P5102 Pastoral Counseling

P6207 Psychology of Religion and Paganism

TRH Course Group IIA, Theology and Religious History (PCC) (3 credit hours):

Any one (1) additional course in PCC

TRH Course Group III, Ministry, Advocacy & Leadership (MAL) (9 credit hours):

M5325 Liturgical Design: Beyond the Wheel of the Year

M5560 Leadership I

M5900 The Art and Craft of Sacred Speech: Homiletics

TRH Course Group IV, Electives (15 credit hours):

Any five (5) additional courses from TRH

TRH Course Group V, Intensives, integrative, community placement (12 credit hours):

AI1 Academic Intensive 1 (1 credit hour)

AI2 Academic Intensive 1 (1 credit hour)

M5999 Capstone Project (formerly Praxis) (1 credit hour)

T7201 Internship I (3 credit hours)

T7202 Internship II (3 credit hours)

Community placement under local supervision, in cooperation with CHS faculty and concurrent participation in CHS-based supervision group during community placement, for example, Clinical Pastoral Education OR supervised internship in an approved clinic, hospital, private therapy office or social agency office.

T7900 Master's Research Thesis OR Project Thesis (3 credit hours)

Master of Pagan Studies

General Requirements: 48 hours and a 3.0 GPA

The Master of Pagan Studies degree fosters Pagan scholarship with study and research in the Department of Theology and Religious History. To earn the degree requires 48 credit hours, the equivalent of two years of full-time study. Studies include courses from each department, plus a project, intensives attendance and a thesis.

Core Course Group (18 credit hours):

C5101 Ethics and Boundaries

C5121 Contemporary Global Paganisms

C5131 Spiritual Formation: Soul Work

C5141 Pagan Theology

C5151 Research Design & Methodology

C5161 Interfaith Leadership

MPS Course Group I, Theology and Religious History (TRH) (12 credit hours):

T5090 World Religions from a Pagan Perspective

T5301 Understanding Ritual Experience

T5560 History of Western Esotericism and Contemporary Paganism from the Golden Dawn to the Present

T6475 Indigenous Religion & Culture

MPS Course Group IA, Theology and Religious History (TRH (6 credit hours)

Any two (2) additional courses from TRH

MPS Course Group II, Pastoral Counseling and Chaplaincy (PCC) (3 credit hours):

Any one (1) course from PCC

MPS Course Group III, Ministry, Advocacy & Leadership (MAL) (3 credit hours):

Any one (1) course from MAL

MPS Course Group IV, Intensives, integrative, thesis (6 credit hours):

AI1 Academic Intensive 1 (1 credit hour)

AI2 Academic Intensive 1 (1 credit hour)

T5999 Capstone Project (formerly Praxis) (1 credit hour)

T7900 Master's Research Thesis OR Project Thesis (3 credit hours)

Community Ministry Certificate

The Community Ministry Certificate is a program of guided independent study designed especially for individuals ready to embark on a 15-month mentored learning experience which may result in optional ordination or credentialing by a specific tradition-organization. Students 18 and older need not have a college degree or previous experience but should be committed to learning which is foundational to serving one's local or regional community spiritual needs. Each student will be assigned to a faculty mentor who supervises your progress, interacts weekly in the online classroom forum, marks assignments for each module, and gives evaluations after five months, ten months and at completion of all fifteen modules. While there are no course live meetings, you and your faculty mentor communicate as needed and desired by email and internet, and by mutually agreed upon phone or video appointments.

Modules are similar to Insights courses rather than our full-semester courses, but include media from a topic expert, a syllabus/schedule, readings, a forum to interact with the faculty mentor, and any other resources desired. You must purchase your own books (from a vendor of your choice). The emphasis is more on comprehension and personal/spiritual development than on writing, though writing must demonstrate competency in the topic.

Student progress through the CMC is self-directed but is designed so that the program is complete by the end of 15 months. Therefore, each module must be completed in the month it is begun, and each module is followed immediately by the next one. Progress to the next module takes place each month when payment is received, regardless of early completion of the previous module.

Upon successful completion of the program, you may submit application to an ordaining body. At this time Sacred Well Congregation has agreed to accept the Community Ministry Certificate as satisfying its education requirements for clergy. We encourage other traditions or organizations to contact Cherry Hill Seminary if they wish to discuss a similar agreement for their clergy candidates. Note that the CMC does not replace specific tradition training.

The CMC is independent of the regular CHS semester, so you may enter the program at any time throughout the year. Registration is only complete when you have set up a monthly recurring payment in Paypal (for the fifteen months of the program) or arranged for an automatic electronic transfer (check with the office about this if you have questions). Should you need to withdraw from the program, there is no refund, and you are expected to cancel your own recurring payment. Should you need a leave of absence, you must notify your faculty mentor in writing, and will pay a re-entry fee equal to one month's

tuition.

Since this program may result in ministerial credentials, the student and faculty mentor will use a CMC Learning Goals checklist throughout the program. Periodic review of progress to date on that checklist will help you make a personal assessment. A faculty mentor has the option of recommending (in unusual cases) that you may not be accepted for ordination and recommend dropping the certificate. The competencies checklist will be used to determine successful completion of the program. FAQs may be found on the CHS web site under Programs.

Module 1	What Is Paganism
Module 2	Ethics & Personal Development
Module 3	Diversity, Culture & Sexuality
Module 4	Community Ministry I (principles of chaplaincy and interfaith, first community project)
Module 5	Life Stages Ministry I: Birth to Young Adult Competencies review 1 with faculty mentor
Module 6	Rituals I (theory)
Module 7	Rituals II (creating your book of ceremonies, blessings, prayers, etc.)
Module 8	Community Ministry II (principles of leadership, second community project)
Module 9	Pastoral Care I: Families & Relationships (includes abuse and domestic violence)
Module 10	Life Stages Ministry II: Adult to End of Life Competencies review 2 with mentor
Module 11	My Personal Theology
Module 12	Pastoral Care II: Mental Health & Addictions
Module 13	Community Ministry III (public speaking, teaching, homiletics)
Module 14	Lifework I
Module 15	Lifework II Competencies final review with mentor; if approved, receive certificate.

Visit our web page to read more FAQs about the Community Ministry Certificate and the form to register. A resume and two personal reference letters are required.

Spiritual Direction Certificate

Spiritual Direction is a process typically offered within faith traditions as a part of formation for religious professionals and selected lay leaders. During the last 15 years training has shifted from small, independent programs to comprehensive programs housed in or affiliated with learning institutions such as Cherry Hill Seminary. Our program is unique because it not only helps spiritual directors to become deeply grounded in their own spiritual identity, but also equips them to practice with clients of a variety of (and no) spiritual identities.

Who should study for the Spiritual Direction Certificate?

This CHS program is for seekers – those who are discerning a call to spiritual direction ministry and who wish to explore that call, engage in personal spiritual growth, and enhance the knowledge and skills needed to be a supportive presence for others seeking their own spiritual direction and a meaningful relationship with the divine (however they understand it). It is for Those who wish to minister to others by offering silence and deep listening to others who struggle or seek to grow in their spiritual lives. In short, this program is for persons who:

- Have some theological background

- Appreciate learning with others from different faith traditions
- Are seeking a deeper spiritual connection in their lives
- Have an interest in engaging with a cohort of fellow seekers
- Who are ready to commit to the 24-month program

Upon Completion

Participants receive their Spiritual Direction Certificate upon successful fulfillment of the requirements of the 24-month program. Upon completion of the program, participants will be credentialed Spiritual Companions, able to ‘hang out a shingle’ as a qualified and professionally recognized spiritual director/companion. Participants can list themselves on the Spiritual Directors International directory and upon completion of the program, participants with UU affiliation (UUSCM or other) also meet the criteria for becoming a part of the UU Spiritual Direction Network.

Format

Students are admitted into a cohort, with a minimum size of six persons. The program takes place over 24 months, includes live online meetings with lectures, discussion, and guest speakers, and covers the following content:

Six themes are woven through every month:

Formation	Know Thyself
Skills	Learn and Practice (practical)
Ancestors/Sibs	Be aware of the diversity of practice and faith, forbears and sibs who do SpiDir work
Practices	Experience this (spiritual)
Tools	Be able to make use of this (resources)
Arts	Expand beyond talking and have fun

Focus for Core I

- Begin to develop personal formation through theological and spiritual growth.
- Learn and practice basic spiritual listening skills.
- Begin to review ancestors/siblings of Spiritual Direction work: contemplative spirituality, the mystics, theology and practice.
- Begin to engage with contemplative and devotional spiritual practices, such as those in Celtic, Desert, Natural, and Creation spiritualities.
- Begin to evaluate and apply tools for discernment, self-discovery and transformation such as Myers–Briggs Type Indicator, the Enneagram, clearness committee, Tarot, and Ignatian discernment.
- Begin to explore the arts in spirituality, e.g. poetry, fairy tales, myth, dance, visual arts.

Focus for Core II

- Continue to develop personal formation and identity through theological and spiritual growth.
- Continue to learn and practice spiritual listening skills and the structure of the companioning relationship.
- Review ancestors/siblings of Spiritual Direction work: contemplative spirituality, the mystics, theology and practice.
- Engage with contemplative and devotional spiritual practices, such as those in Wiccan, reconstructed Pagan, and indigenous spiritualities.

- Evaluate and apply more tools and arts, including exploring scriptures (defined broadly) for spiritual direction.
- Put Spiritual Direction into contemporary social contexts through discerned action for social transformation: spiritual life and practice as a call to service and justice in our world.

Focus for Core III

- Exploration of your traditions theology and its relevance to the practice of Spiritual direction and developing an identity as a Spiritual Director.
- Gifts from and distinctions from psychology skills: transference and counter-transference, shadow and complex identification, depth psychology, family systems, and brief therapy. (Spiritual Direction is NOT therapy.)
- Practicum in guiding retreats and groups and intro to working in Organizations.
- Connecting with ancestors/siblings: a deep dive with a selected mystic
- Tools such as Dream work, including the function of dreams, and how to use dream work with both individuals and groups; Parts of self work, inner landscape, teachings from Murshida Rani Kathleen McLaughlin, Starhawk and Ken Wilber.

Focus for Core IV

- Articulating an identity and planning a future in Spiritual Direction work.
- Spiritual direction with particular populations. (bereavement, addictions, aging, illness, disability/difference, etc.)
- Integrating ancestors/siblings, modalities, skills, practices, tools, arts, and personal theologies with the practice of Spiritual Direction.
- Developing a heart-centered business.
- Ethics, collegiality, supervision and consultation.

Ethics and Boundaries

The CHS self-directed Insights Course is included in your program cost.

Second course of your own choosing

This may be taken at CHS or elsewhere at any time during the program.

There is no charge for a CHS Insights course; a graduate course or a course taken elsewhere is at your own expense.

Praxis

Introductory exposure to direction in dyads and triads in Year 1. In Year 2 we will guide you in setting up your trial-practice, offering spiritual guidance to 3 persons.

Required Texts

The full reading list can be found on the Spiritual Direction Reading List Page of the Cherry Hill Seminary web site.

Spiritual Direction

The effective and ethical practice of spiritual mentoring depends upon the caregiver's own continual cultivation of emotional and spiritual resources, self-knowledge, and ability to use themselves for the care of others. Therefore, students are required to receive monthly spiritual direction at their own expense throughout the course of the program. Either supervised group or individual spiritual direction meet this requirement. Referrals to spiritual mentors will be provided on request. Mentors must be approved by the

program chair, therefore, if you are already in a spiritual mentoring relationship, please discuss with the program chair during your interview.

Cost

- \$100 tuition per month for 24 months. You will be billed on the 1st of each month. Payment is due on receipt of the invoice.
- The cost of the “second course of your own choosing.”
- The cost of the spiritual companion/supervisor you meet with throughout the program (outside of CHS).

Time Commitment

6 hours per month for online discussions and assignments for submission.

5 hours per month for face-to-face meetings with the whole cohort/small groups/a study-buddy

1 hour per month for your spiritual director

3 hours per month for reviewing material

Budget time throughout each core for interviews, one retreat per core, a book per core, an elective, an ethics course then during year two, seeing seekers (your own practice clients) and a supervisor.

Application Calendar

Applications are accepted and approved on a rolling basis. Start times depend on which cohort you join, either spring or fall of that year.

What you need to submit

1. Application Form with admission fee
2. Two short essays
3. Two letters of reference
4. Interview with CHS Staff

Application Details

Essay (1): 1-2 pp double-spaced in 12-point font. Please share your current understanding of the ministry of spiritual direction and describe your discernment of call to the ministry of spiritual direction.

Essay (2): 1-2 pp double-spaced in 12-point font. Please narrate your faith journey and current spiritual practices, including a description of your relationship to a faith or spiritual community.

Two letters of reference which attest to your readiness to undertake the responsibility of offering spiritual guidance and to commit to academic study.

Letter (1): A person in your professional life or a leader in your spiritual community/tradition who knows you well (If you need to schedule a time where they interview you, that is an option.)

Letter (2): A person in your personal life who is NOT a family member who knows your spiritual and personal commitments and traits.

An interview with the Spiritual Direction Certificate program lead and dean of students.

Your own spiritual direction:

The effective and ethical practice of spiritual mentoring depends upon the caregiver’s continual cultivation

of emotional and spiritual resources, self-knowledge, and ability to use themselves for the care of others. Therefore, students are required to be in spiritual direction with a practitioner at their own expense. Students should indicate that they have begun this requirement by requesting that a letter be sent by their spiritual mentor to the Program Chair indicating that the spiritual direction is either ongoing or will commence by the time you start the program. Mentors must be approved by the Program Chair. Referrals will be provided on request.

Additional Academic Requirement Information

Academic Intensive

Cherry Hill Seminary offers a residential academic intensive, which gives students the opportunity to work with faculty and other students face-to-face in a retreat environment. Academic intensive gatherings are four to seven days long, depending on the topic, and are held in various retreat locations. Typically, academic intensives require readings and homework in the several weeks before and after the face-to-face portion. Each student is required to complete two academic intensives before graduation. While only required to complete two intensives, matriculated students are welcome to attend as many intensives as they wish. Students are invited to consult with their Advisor in choosing their Academic Intensives. Note: The Seminary has chosen not to hold intensives while the danger of COVID continues to prevail. When ready, plans may be announced for a virtual intensive.

Capstone Project (formerly Praxis)

The Capstone Project class is required for all master's students and should be undertaken promptly after half the credits toward the degree have been completed. The class is worth one credit toward the degree, and as such, should involve approximately 45 hours of work. Students approach a faculty member with whom they have previously studied to create a Capstone Project proposal in their area of ministry. Once the proposal has been approved, the student will have six months to complete the project, which will be evaluated by the supervising faculty member.

Projects may include community advocacy, field research, library research, the creation of educational curricula, ritual design, creative writing, and more. Regardless of the nature of the project, the student will be expected to find a way to serve the larger community with this work and produce a written, visual, or audio summary of the project that can be shared with other students and faculty in the Capstone Project classroom. The final project presentation should demonstrate how the Capstone Project work serves the larger community. Prerequisite: all required core courses is recommended.

Master's Thesis or Project

Cherry Hill Seminary's Masters of Divinity Thesis or Project is the avenue by which students demonstrate their individual efforts to master an education in diverse aspects of Pagan scholarship, philosophy, practice, and skilled pastoral counseling. This project or thesis will demonstrate original thinking on the part of the student and reflect her or his understanding of the integrated concepts and theories central to the discipline of Pagan pastoral counseling. Each student, along with his or her Master's committee, develops and implements a project or thesis topic that demonstrates the integration of the principles and practices learned at Cherry Hill Seminary. Additional information is given below in the appendices of this handbook. All master's students are required to take the core course C5151 Research Design and Methodology, which will also give them valuable guidance for their thesis work.

Internships and Field Experience

Most Cherry Hill Seminary degrees require some component of community placement or field experience, along with concurrent participation in a supervision group with other students doing community placement work. Students working on a Masters degree in Pagan Studies are required to complete Field Work in the form of a Practicum of 3 credits. Students working on a Master of Divinity degree will do an internship of six credits, which may be spread across two semesters.

These requirements may be met in one of several ways: by completing one or more units of Clinical Pastoral Education in a hospital, prison, or other institutional environment; by serving an internship in a congregation, coven, grove, tribe, or other religious community; or by service elsewhere in the Pagan community. Any community placement must be approved by the student's department chair and the Academic Dean, or (in the absence of an Academic head) the Executive Director. Note the 5999 Capstone Project (formerly Praxis) is a prerequisite for Ministry, Advocacy & Leadership majors, and Pastoral Counseling and Chaplaincy majors.

Capstone Project (formerly Praxis)

The Capstone Project is required for all and Masters of Divinity and Masters of Pagan Studies students and should be undertaken promptly after half the credits toward the degree have been completed. The Capstone Project is worth one credit toward the degree, and as such, should involve approximately 45 hours of work.

The Capstone Project may include community service, field research, library research, creation of educational curricula, ritual design, creative writing, and more. Regardless of the nature of the project, the student will be expected to produce a written, visual, or audio summary of the project that can be shared with other students and faculty.

The student approaches a faculty member with whom they have previously studied to propose a project in their area of ministry. The proposal must be approved by the Capstone Project supervisor and department chair (or, if the advisor is also the department chair, by the Academic Dean). Once the proposal has been approved, the student will have six months to complete the project, which will be evaluated by the supervising faculty member. Subject to the approval of the Capstone Project supervisor and department chair (or Academic Dean), one six-month extension on the project may be granted. Students failing to complete the Capstone Project during the extension period must submit a new proposal for approval. An extension or new proposal must be registered with the office with tuition payment.

Proposal Requirements

The Capstone Project proposal is a formal written document of three to ten pages in length, depending on the type of project. Students are encouraged to consult with their supervisors about the process of drafting a proposal.

It should include the following sections:

1. Descriptive title. This title can be provisional.
2. Abstract. Briefly summarize your project in no more than 300 words. Include the reasoning behind the project, the audience or community it is meant to serve, its relationship to your ministry, your methods, your thesis or goals, and the project's predicted outcome.
3. Focus and Method. In some detail, state the purpose or goals of the project, demonstrate your knowledge of the area or subject, describe major relevant issues, explain your methods, and define the project's boundaries.
4. Significance. Describe the potential significance and contribution of your project, as well as possible challenges and weaknesses. How will your project benefit the Pagan community in general, your community in particular, and/or your personal ministry?

Annotated bibliography. What resources have you drawn on to design your project? Using an APA, MLA, or Chicago Style Guide, list books, journals, articles, electronic materials, or other resources relevant to your project. After each citation, include a brief (up to about 150 words) descriptive and evaluative paragraph that informs the reader of the relevance of the source cited.

After the proposal is approved, the student negotiates a written contract with the project supervisor. The contract includes a schedule of regular meetings with the supervisor, a list of Capstone Project goals, an agreed-upon series of deadlines by which the various goals will be met, and the method by or medium in which a summary of the project will be submitted to the Capstone Project classroom. This contract may be revised with the agreement of the supervisor within the initial six-month period; extensions beyond six months require formal approval by the department chair (or Academic Dean).

Master's Thesis or Project

Cherry Hill Seminary's Masters of Divinity Thesis or Project is the avenue by which students demonstrate

their individual efforts to master an education in diverse aspects of Pagan scholarship, philosophy, practice, and skilled pastoral counseling. This project or thesis demonstrates original thinking on the part of the student and reflects their understanding of the integrated concepts and theories central to the discipline of Pagan pastoral counseling. Each student, along with their thesis committee, develops and implements a project or thesis that demonstrates the integration of the principles and practices learned at Cherry Hill Seminary.

The thesis may be the record of the student's successful completion of the project. This documentation and synthesis of work completed is also expected to show the personal spiritual and creative growth which occurred as a result of the education received at Cherry Hill Seminary. A separate project is not always necessary. In some cases, the thesis itself may be the project. A project may take many forms, including but not limited to such things as:

- Original academic research and evaluation on a topic related to Pagan pastoral counseling
- Artistic, dramatic and musical authorship or performance
- Teaching and training programs in contemporary Paganism or Earth-based spirituality
- Workshops or public events
- Authorship of a book or guide for others
- Creative works of writing
- Deep engagement in community work
- Video or audio recordings and internet communications projects
- Long-term projects of community service

In all instances, the Master's thesis or project serves as the official and community record of one's work at Cherry Hill Seminary and must have enough information recorded in it to enable those who will read it to see exactly what the M.Div. candidate did for their project, how it incorporated the values of the Seminary, how developing the specific project or thesis functioned to contribute to the candidate's spiritual formation, and what were the sources of influence for the project (i.e. in terms of books, research, etc.). The Master's thesis or project is needed to fulfill requirements for graduation.

The Master's Committee is integral to the successful completion of the project and thesis. Therefore, it is vital that the committee be aware of the project's nature and what the candidate is attempting to accomplish. Each candidate will select three committee members. Two of the members must be faculty at Cherry Hill Seminary with terminal degrees from an accredited institution. They must be willing and able to help the student with reading and revising the thesis document, as well as substantive advising and feedback. One of these individuals will serve as the Chair of the Committee. The third member of the committee may be a content specialist who may or may not be affiliated with the Seminary, but who must have a terminal degree from an accredited institution.

The committee reads and approves the student's initial project proposal as well as the final thesis document. After the proposal is approved, the student will negotiate a written contract with the committee chair, which must be approved by the Chair of the student's department. The contract includes a schedule of regular meetings with the committee chair, a list of project goals, an agreed-upon series of deadlines by which the various goals will be met, and the method by or medium in which a summary of the project will be submitted.. This contract may be revised with the agreement of the Master's Committee Chair within the initial six-month time period; extensions beyond six months require formal approval by the Chair of the student's department. Extensions require registration in and tuition payment for 5901 Thesis II. Read more about the master's thesis in the Appendix.

Internship or Supervised Residency

Most Cherry Hill Seminary degrees will require some component of community placement or field experience, along with concurrent participation in a supervision group with other students doing community placement work. Students working on a Master of Divinity degree will do an internship of six credits, which may be spread across two semesters.

These requirements may be met in one of several ways: by completing one or more units of Clinical Pastoral Education in a hospital, prison, or other institutional environment; by serving an internship in a congregation, coven, grove, tribe, or other religious community; or by service elsewhere in the Pagan community. Any community placement must be approved by the student's department chair and the Academic Dean, or (in the absence of an Academic head) the Executive Director. Note the 5999 Capstone Project is a prerequisite for Ministry, Advocacy & Leadership majors, and Pastoral Counseling and Chaplaincy majors.

About Clinical Pastoral Education

Clinical Pastoral Education (CPE) is an accredited program that operates much like an apprenticeship, giving you hands-on ministry experience in a clinical setting. You work under trained supervisors and are exposed to challenging ministry situations in which you must integrate personal, theological, and pastoral skills. CPE began in 1925 as a form of theological education that combines academic learning with that gained in clinical settings, such as hospitals and health care facilities, hospices, psychiatric and community care facilities, geriatric, veterans and rehabilitation centers. It is accredited by the Association for Clinical Pastoral Education (ACPE), and recognized by the U.S. Secretary of Education through the U.S. Department of Education.

CPE is one of the best ways to get hands-on supervised experience in the work of chaplaincy and professional spiritual care. It is a spiritually- and emotionally-stretching experience, one that will lead you to confront important questions about suffering, death, theodicy, and meaning, while you integrate them into your own life path. It is also an incredibly rewarding experience that will help prepare you for the challenges of real-life ministry, as you grow into your identity as spiritual care provider.

Cherry Hill Seminary gives academic credit for CPE done at a site accredited by ACPE. CPE is usually offered in single units, where 1 unit is a minimum of 400 hours. CHS gives 6 credit hours for 1 unit of CPE. Because CPE is so time-intensive, you should not take other classes during this period. Some people spread this work over 2 semesters in order to receive the full 1 unit.

Before doing CPE, you must successfully complete these courses:

P5301: Introduction to Chaplaincy

C5101: Ethics and Boundaries

It is your responsibility to locate a program in your locale and apply to do CPE. A list of ACPE accredited sites may be found at www.acpe.org. CPE opportunities tend to be competitive, so consider applying early and, if possible, to more than one site. The CHS faculty member who taught your introductory class will usually write you a letter of recommendation and be your CHS contact and faculty advisor during your CPE work. Once you have been accepted at the CPE site and are ready to begin, fill out the form located on our web site, under For Students/Materials, and enroll in CPE. You will meet with your CHS faculty advisor once a month as you do CPE. When you have completed your CPE training, you must follow these steps to receive academic credit toward your CHS degree:

1. Make a payment to CHS for the number of credit hours for which you are applying (6 credits for 1 CPE unit). Tuition rates are posted online under For Students, and you may contact the CHS office for assistance.
2. Send a copy of your CPE supervisor's final evaluation letter, documenting your completed CPE hours, to the CHS Office (our address is in the website footer below)
3. Send your CHS faculty advisor a 4500-word theological reflection paper from your experience of CPE.

In the event that you cancel or withdraw from your CPE program, the usual policy on Drop/Add or Withdrawal from a CHS course applies. If you have more questions, contact your CHS department chair or advisor.

Admissions

Cherry Hill Seminary welcomes those who hunger for knowledge, training and the dynamics of the classroom educational experience. There are several ways to pursue learning with Cherry Hill Seminary.

Applications to a master's degree program or Spiritual Direction Certificate are competitive, requiring a rigorous admissions process, described below. Insights courses are open to all, including the general public.

Finally, anyone may audit a Cherry Hill Seminary course by obtaining the written permission (via email) of the instructor or the office. An email address for each instructor is found on our web site, on the faculty listing under information about Cherry Hill Seminary. Tuition fees are the same whether auditing a course or receiving credit.

All students must:

- Have proficiency and access to an up-to-date computer with voice-to-voice capability and reliable internet access, preferably high-speed (see Technology Requirements for details);
- Be able to attend and participate in video call class sessions;
- Be competent to perform work at the level of the course(s) in which they are registered;
- Demonstrate competence in English language and writing; and
- Demonstrate interest in Pagan and Nature spiritualities studies, leadership and service.

Application to a Degree Program

Choosing to serve through Pagan ministry or pursue Pagan academic studies is a life-changing decision, one that requires spiritual assessment, community support and personal commitment. If you desire to enhance your ability to serve others and your community, are prepared for commitment to graduate-level coursework, and find yourself in harmony with the Cherry Hill Seminary mission and values, then we invite you to begin the process of application for admission.

Admission to Cherry Hill Seminary degree programs is competitive. Once an application package is complete, you will be interviewed before the application is forwarded to the Admissions Committee. A successful application will make the strong case that you:

- Are prepared for graduate-level studies;
- Have the required educational background;
- Have a mature understanding of your own spirituality;
- Are committed to completing the degree.

Applicants are responsible for ensuring that all materials reach Cherry Hill Seminary in a timely manner. Applicants who wish to begin course work in advance of the Admissions Committee's decision may do so. If you are admitted to a degree program, any credit-hours earned after the date of application will be counted toward your degree.

Each completed application package must include:

1. Official transcripts, sent directly to Cherry Hill Seminary by each institution, for all post-secondary education. (See Transcript Policy below)
2. With limited exception (see below) Cherry Hill Seminary requires each matriculating candidate for a degree to have a bachelor's degree from an accredited school (any subject).
3. Non-refundable application fee of \$65, payable online.

4. Application form submitted online, found at the main web site under Academics/Admissions.
5. Résumé or curriculum vitae.
6. Personal essay (see Personal Essay below).
7. Two letters of professional recommendation (see Letter of Professional Recommendation below).
8. One letter of personal recommendation (see Letter of Personal Recommendation below).

Some applicants will also be required to submit the following (see policies below):

- Official Graduate Record Examination (GRE) or Miller Analogy Test (MAT) scores.
- Official Test of English as a Foreign Language (TOEFL) or TOEFL Internet-Based Test (iBT) scores.

There may be other requirements for specific degree or certificate programs.

Application to the Community Ministry Certificate

Applicants to the Community Ministry Certificate must complete the application form found online under Academics/Community Ministry Certificate. The application includes upload of your work resume, two personal references, and an application fee. Applicants set up a monthly automatic payment through a third-party provider (which may be cancelled by the student at any time the student wishes to exit the program). Most applicants are reviewed and matched with a faculty-mentor within 24-48 hours.

Transcript Policy

During the application process, students must arrange for official transcripts of all prior education above secondary school level to be sent directly from the previous educational institution to Cherry Hill Seminary. As different schools have different policies for sending transcripts, we suggest you contact each school early in your application process. Any fees charged by the sending institution are your responsibility. All transcripts from institutions outside the United States and Canada must be evaluated, which may require more time.

All transcripts in languages other than English must be translated at the student's expense. Please contact the Cherry Hill Seminary office for details. Transcripts received before your Application for Admission will be kept on file for one year and evaluated after your Application for Admission is received. Transcripts issued to the student will not be accepted.

Transcripts must be received from all institutions listed by the student. Please be aware that any credits transferred from one institution into a degree granted by another institution must be supported by official transcripts from both institutions.

GRE or MAT Testing

At this time, only an applicant with no bachelor's degree is required to provide scores from either the Graduate Record Examination (GRE) or Miller Analogy Test (MAT). If an applicant has not earned a bachelor's degree but has already taken either of these tests, you should have the official scores sent to Cherry Hill Seminary. If you have taken neither, you can choose one, take it, and have those scores sent to our office. Until further notice, official scores will be accepted regardless of age. The CHS Designated Institution Number for the GRE test is 4901. The CHS Recipient Number for the MAT test is 2489.

Personal Essay

We anticipate that this essay can be completed in 4-15 pages for most students. Your essay should discuss the following:

- Your background in religious faith or spiritual practice. What traditions and ideas have been most formative for you? How did you make the decision to seek education in preparation for ministry?
- Your educational background. What has been helpful to you? Less important? How do you see your personal, spiritual and career goals enhanced by further study?
- Your work experience. Where have you been most successful? Why do you think that is?
- Your engagement with or leadership in the Pagan community. Discuss how you hope to serve the Pagan community as a result of your Cherry Hill Seminary studies.
- Reflect on how your background will support your experience as a Cherry Hill Seminary student.
- In what areas do you feel you will need additional support?
- How do you feel Cherry Hill Seminary can meet your present needs?
- How do you see your participation enhancing the Cherry Hill Seminary community?
- Share any other information that you feel would be helpful to the Admissions Committee.

Letter of Professional Recommendation

Letters of professional recommendation must be sent directly from each of your references to Cherry Hill Seminary, from professionals in your field or your chosen field of study, who know you personally. Each letter should include the reference's contact information, how they know you, for how long, and their opinion of your interest, character, and ability to complete a graduate-level seminary program. Directions for letters are explained on the application portal..

Letter of Personal Recommendation

One letter of personal recommendation is from someone who is currently acquainted with you and who is not a family member or a peer in coven or tribe. This letter should include the reference's current contact information, how they know you, for how long, and their opinion of your interest, character, and ability to complete a graduate-level seminary program. This letter may be from an elder or priest/ess who has overseen your training.

Admissions Process

When an application package is complete, a representative from the Admissions Committee will contact you to schedule a required personal interview, which may be conducted by telephone or internet. After the interview, the Admissions Committee will review the completed application package. Your references will be verified.

Applicants will be informed of the committee's decision in writing within 30 days after final review. If you are accepted into a degree program you must promptly notify the Seminary of your decision to matriculate, to postpone entrance, or to decline the opportunity. Your decision must be received by Cherry Hill Seminary no later than the date noted in your acceptance letter. Upon receipt of a complete admissions package, the Seminary will usually return an acceptance decision to you within six weeks.

Exceptional Situations

Cherry Hill Seminary may on occasion conditionally admit a non-baccalaureate student to a master's degree program. The Academic Dean, in consultation with the Admissions Committee, determines equivalency and other conditions.

Such exceptions are strictly regulated by the state Commission on Higher Education and by accrediting bodies, and so are only considered for exceptional situations. Cherry Hill Seminary may admit a limited number (no more than 5%) of applicants without undergraduate degrees, provided we have reasonable assurance that you can complete a graduate-level program.

Applicants for this exemption should have excellent scores on the Graduate Record Examination (GRE) or the Miller Analogy Test (MAT) and a minimum of 7-10 years of experience in their field. You must document your experience and the reasons you seek this exemption.

For students granted such exceptional admission, the Academic Dean's letter of exception will serve in place of the documentation of a bachelor's degree required of all other students before master's degree graduation.

Applicants whose native language is not English, and who have not earned a degree from an appropriately-accredited¹ institution where English is the principal language of instruction, must receive a minimum score of 530 on the paper-based Test of English as a Foreign Language (TOEFL) or 71 on the Internet-Based Test (iBT) or its equivalent.

Conditional Admission

If an applicant is offered conditional admission to a degree program, you must complete at least two terms in one academic year, including a minimum of nine credit hours. All work must be completed at a 3.0 GPA or better, and any other conditions imposed at the time of conditional admission must be met.

Upon completion of this requirement, and upon written request to the school by the student, the department chair and a committee of faculty will review your progress and assess the potential for successful completion of the degree program. As a result of this review, you may be approved for unconditional admission.

The committee may instead elect to extend the temporary conditional admission by up to one calendar year, at which time you must be either unconditionally admitted or dropped from the degree program.

If you are not admitted to the degree program, classes successfully completed may be credited toward a specific certificate program, if applicable to that program.

Postponement and Readmission

A student who has been accepted for admission to Cherry Hill Seminary may postpone entrance into the program for up to one year. You must promptly notify the Seminary of your decision to matriculate, to postpone entrance, or to decline the opportunity.

Your decision must be received by Cherry Hill Seminary no later than the decision date noted in your acceptance letter. If you fail to matriculate within one calendar year after acceptance, you will not be permitted to register until a new application has been submitted and a new application fee paid.

Transfer Credits Policy

Cherry Hill Seminary recognizes the potential that previously completed advanced studies at other institutions and organizations might be the equivalent of one or more courses at Cherry Hill Seminary. Enrolled, matriculated, degree-seeking students are welcome to request a course transfer evaluation. It is your responsibility to gather material in support of your request and submit them to your major Department Chair for evaluation. Such material will include:

- Course descriptions.
- Syllabi that clearly show required reading, writing requirements, and other assignments.
- Work completed including papers, exams, reports, written defenses and other work.

¹ Accredited by an agency recognized for the purpose by the U.S. Secretary of Education.

Upon the approval of the Department Chair and the Academic Dean, credit may be given for up to three (3) courses (maximum of nine credits) where you have documented equivalence with Cherry Hill Seminary courses. Credit may not be given for any of the five core courses.

All applicants who seek credit from Cherry Hill Seminary for prior studies at another institution must provide certified transcripts of academic work for which you earned a grade of B or better (or the equivalent) from the institution where the work was completed.

As is best practice for a degree-granting institution, all prior work must be evaluated during the admission process. All previous classes, from Cherry Hill Seminary or any other school, will be evaluated individually for alignment with our specific degree criteria.

No credits will be accepted for transfer toward a Cherry Hill Seminary degree if another institution has already counted them toward an earned degree. To apply for transfer credit, submit the online Credit Transfer Evaluation Request Form found on our main web site under For Students/Materials.

No credit for life or work experience is awarded towards a master's degree from Cherry Hill Seminary. Note that if you transfer from Cherry Hill Seminary to a degree program at a different institution, it will be up to that school to determine whether and how to count your coursework at Cherry Hill Seminary towards the degree at your new school.

Credits approved for transfer will be added to the total number of credits earned by the student which count towards a degree, but transfer course grades will not be considered when calculating the Cherry Hill Seminary Grade Point Average (GPA).

Matriculation Policies

Cohort

When a student is admitted and matriculates into a degree or certificate program, they become part of a cohort, or group, which corresponds to the handbook in effect at that time. Thus, if the stated requirements for a degree change with a new handbook, you will continue to work towards completion of the requirements under which you were originally admitted. You may discuss with your department chair the possibility of working towards requirements either from the handbook current when matriculated, or the one current at the time of graduation.

Continuous Enrollment Policy

Matriculated students must enroll in and successfully complete a minimum of six credit hours per Academic year, unless permission from administration for exceptional situations.

Leave of Absence from a Certificate or Degree Program

A student desiring a leave of absence from a degree or certificate program must submit the Student Leave of Absence form found on the web site under For Students/Materials. The return date may not be more than one academic year later. A leave of absence will not be granted for more than one academic year. Following an approved leave of absence, you must submit the Extended Leave of Absence Return form with a \$25 administrative fee.

A student who has taken an unauthorized leave of absence, one who fails to return after an authorized leave or who fails to successfully complete six credit hours in one academic year may reapply for admission by following the guidelines for new applicants. Consideration may be given of any CHS courses taken previously, but the carrying over of credit units for these classes will depend on when they were taken and the grades earned.

Medical Leave of Absence from Program

A student desiring a leave of absence from a program must notify the Dean of Students and the Academic Dean in writing and include medical substantiation and a medically-approved anticipated return date. Upon receipt, the Dean of Students or Academic Dean may grant a medical leave of absence for up to one year. If you are medically prohibited from returning by the anticipated date, the same procedure must be repeated. Under most circumstances a medical leave of absence will not be granted for more than two academic years.

Withdrawal from a Program

If a student desires to withdraw from a program, you must notify the Dean of Students and the Academic Dean in writing. You are encouraged to participate in an exit interview. To be shown in CHS records as having left in good standing, you must formally withdraw.

A student who has accumulated four withdrawals or four no credit (NC) classes must contact the Dean of Students for academic counseling, before being allowed to enroll in any further classes.

A student who has withdrawn from a program in good standing may reapply for admission. This entails submission of a new application form, resume, personal essay, and application fee, as well as an interview with the Dean of Students and/or the Chair of the Department in which the applicant is interested.

Changes in Programs, Courses, or Semesters

Cherry Hill Seminary reserves the right to make changes in curricula, degree requirements, course offerings, and all academic regulations, at any time when, in the judgment of the Executive Director or the board of directors, such changes are for the best interest of the students. Cherry Hill Seminary assumes that students, through the act of registration, accept all published academic regulations appearing in this handbook, class schedule or in any other official announcement.

Unforeseen circumstances may interfere with the scheduling of any particular course or degree offering. Each academic department concerned works closely with students facing such problems in an effort to resolve them. Classes may be cancelled for circumstances such as insufficient enrollment.

Registration

Degree Program Courses: master's-level classes are open to all matriculated students on a first-come, first-served basis. Non-matriculated students may audit a course by first requesting written (electronic) permission of the instructor.

Credit hours are awarded at the successful completion of master's level classes. One credit hour is the equivalent of 45 hours of academic work over about 15 weeks. Thus, a student enrolling in a three-credit-hour class can expect to put in 135 hours of effort for that class during that term.

Occasionally course prerequisites must be met before registering for a class with prerequisites, unless a waiver is granted by the instructor or the department chair. Faculty and instructors receiving such requests should consult with the chair of their department before replying. Credit hours may be applied to certificates, but unit hours may not be applied to degrees.

Insights Courses are open to the general public, and to all matriculated students, on a first-come, first-served basis.

Course Audit

Non-matriculating students, faculty, staff, auditors and alumni are permitted to take individual classes with prior approval from the instructor, and on a space-available basis. Faculty members and instructors may deny such requests at their own discretion. Registration fees are the same whether auditing or receiving credit.

Adding, Dropping, or Withdrawing from a Class

Students may add or drop a class at any time before midnight of the seventh calendar day of the term, or for Insights classes, the seventh day after the start of class.

Students may withdraw from a course during the first 30 calendar days of the term by emailing both the instructor and the CHS office (CHS@cherryhillseminary.org). The student will receive a grade of W, which has no effect on the student's grade-point average.

After the 30th day of the term, withdrawing students will receive a grade of W annotated with the grade they have earned up to the point where their participation ended. The student's grade point average will be unaffected. Faculty members and instructors should inform their Department Chair and the CHS office whenever a student withdraws from their classes.

Students who do not withdraw, but who fail to complete minimum required work in a course, will receive a grade of N, or "not acceptable." After four withdrawals a master's or certificate student must meet with the Dean of Students or department chair for academic counseling before registering for class again.

An emergency exemption may be granted in the event of a death in the immediate family, severe illness, natural disaster, military deployment, or other circumstances. The student is responsible for contacting her or his department chair, the Dean of Students, or the CHS office to request an emergency exemption, which will be reported as a grade of Incomplete and will have no effect on the student's GPA. Community Ministry Certificate students, should follow the specific program description for policy.

Past Courses Taken at Cherry Hill Seminary

Non-master's classes taken at Cherry Hill Seminary before Fall 2009 can only be credited toward a degree if they meet master's-level class criteria in several categories, including course design and workload, teacher's academic credentials, and the extent to which the content taught that semester matches what is included in a similar class at this time.

Non-master's classes taken at Cherry Hill in Fall 2009 and later will *not* be counted toward a degree, although master's-level classes may be counted toward a certificate. Students enrolled in a certificate program are allowed to take master's classes, if there is room.

Financial Information

Tuition and Fees

Current tuition rates are as follows:

Insights courses: \$85 per course.

Master's-level courses: \$190 per credit hour. Most courses are 3 credits (\$570 per course)

Community Ministry Certificate: \$100 per month, 15 months.

Spiritual Direction Certificate: \$100 per month, 24 months.

Refunds

Students may drop courses with no academic penalty if a request is made in writing (by email to the office, CHS@cherryhillseminary.org) by midnight of the Drop/Add date listed in the Academic calendar. Tuition for courses dropped by the Drop/Add date will be refunded at 85%, less the merchant's fee charged by any processing agent.

Example:

Tuition paid: \$570.00

85% of tuition: \$484.50

Less merchant fee: \$11.40

Net refund to student: \$473.10

No refunds are given for the Community Ministry Certificate since students pay per month and may stop payments at any time. Tuition rates are subject to change, but the Seminary endeavors to keep classes affordable and avoid frequent tuition increases.

Refunds may be applied to the next term's tuition, if requested. Courses dropped after the Drop/Add date will not be refunded. Refunds will be issued no later than 30 days from written notice of cancellation by student. Tuition and fees must be paid in full before certificates and/or degrees are conferred or transcripts provided.

Grading and Evaluation

Grading

Grades are submitted in accordance with the academic calendar and students are notified by Cherry Hill Seminary via email. If you have not received your grade within 30 days from the end of a course, please email CHS@cherryhillseminary.org promptly. On occasion, students and teachers may have differing opinions about grades. If you wish to request a grade review, a form is available online under information

for students. All Cherry Hill Seminary degrees and certificates require a 3.0 cumulative GPA for graduation.

Note: Non-matriculated students successfully completing a master's class will earn unit hours instead of credit hours. Insights courses are awarded Complete/Not Complete results rather than a letter grade. A course may not be counted for more than one category within the major.

Grade-Point Average (GPA) is the total grade points earned for all classes, divided by the total credit hours for all classes. Grades are based on the following 4.5 scale:

A+	=	4.5 (only available for 6000 + level classes) (98-100%).
A	=	4.0 (95-100%)
A-	=	3.75 (90 – 94%)
B+	=	3.50 (87-89%)
B	=	3.0 (83-86%)
B-	=	2.50 (80-82%)
C+	=	1.0 (77-79%)
C	=	0.5 (73-76%)
NC	=	0.0 Not acceptable
U	=	Grade not reported; changes to W after one semester
W	=	Withdrawn, no grade
I	=	Incomplete

Audited classes are not graded and will be reported as “audit” on transcripts if the instructor indicates that the student fulfilled the auditing requirements.

A grade of Incomplete may be recorded at the end of a semester by permission of the instructor. The student receiving an incomplete grade must: a) have completed at least 60% of coursework during the semester; and b) finish any required work by the end of the next semester.

Under extraordinary circumstances a second extension of one more semester may be granted by the instructor. If course requirements are not complete by the end of an extension, a failing grade will be recorded.

A+ = 4.5 98-100%, only available for 6000+ level classes

- Consistently demonstrates extraordinary work and practice;
- Greatly exceeds expectations in academic, professional and participation standards;
- Original ideas, research, practice, synthesis and contributions;
- Insightful academically, professionally and personally;
- Incisive logic, presentation and methodology;
- Incisive analysis, contrast, comparison and evaluation; and
- Creative development and use of content.

A = 4.0 95-100%

- Consistently demonstrates excellent work and practice;
- Exceeds expectations in academic, participation and/or appropriate standards;
- Original ideas, research and and synthesis;
- Insightful academically, personally and/or professionally;
- Incisive logic, presentation and methodology;
- Incisive analysis, contrast, comparison and evaluation; and

- Creative development and use of content.

A- = 3.75

90 – 94%

- Regularly demonstrates strong work and practice;
- Exceeds expectations in academic, participation and/or appropriate standards;
- Original research and synthesis;
- Insightful academically, personally and/or professionally;
- Appropriate logic, presentation and methodology;
- Incisive analysis, contrast, comparison and evaluation; and
- Creative use of content.

B+ = 3.50

87-89%

- Consistently demonstrates appropriate work and practice;
- Meets expectations in academic, participation and/or appropriate standards;
- Competent and reflective research;
- Thoughtful academically, personally and/or professionally;
- Appropriate logic, presentation and methodology;
- Appropriate analysis, contrast, comparison and evaluation; and
- Competent and reflective use of content.

B = 3.0

83-86%

- Consistently demonstrates appropriate work and practice;
- Meets expectations in academic, participation and/or appropriate standards;
- Competent research;
- Thoughtful academically, personally and/or professionally;
- Appropriate logic, presentation and methodology;
- Appropriate analysis, contrast, comparison and evaluation; and
- Competent use of content.

B- = 2.50

80-82%

- Regularly demonstrates appropriate work and practice;
- Meets most expectations in academic, participation and/or appropriate standards;
- Adequate research;
- Adequately thoughtful academically, personally and/or professionally;
- Adequate logic, presentation and methodology;
- Adequate analysis, contrast, comparison and evaluation; and
- Regular competent use of content.

C+ = 1.0

77-79%

- Demonstrates inconsistent quality in work and practice;
- Meets academic, participation and/or appropriate standards;
- Incomplete/inadequate research;
- Functional academically, personally and/or professionally;

- Adequate logic, presentation and methodology;
- Adequate analysis, contrast, comparison and evaluation; and
- Competent use of content.

C = 0.5

73-76%

- Demonstrates inconsistent quality in work and practice;
- Inconsistently meets academic, participation and/or appropriate standards;
- Incomplete/inadequate research;
- Inconsistently functional academically, personally and/or professionally;
- Adequate logic, presentation and methodology;
- Adequate analysis, contrast, comparison and evaluation; and
- Competent use of content.

Mid-Program Advising

Each matriculated student in a master's level program at Cherry Hill Seminary will meet with their department chair after completing 40 credits towards their degree to review their progress. Prior to the beginning of the fall term, the Dean of Students will review the records of each active matriculated master's degree student. When a student has successfully completed 40 credits towards their degree, the Dean of Students will notify the appropriate department chair and the student of the need for the advising meeting. The department chair and the student will schedule the meeting at a mutually agreeable day and time. The meeting will be used to review and evaluate the student's progress and to recommend future work in order to enhance and facilitate the completion of the degree program. Following the meeting, the department chair will notify the Dean of Students and the Dean of Academic of the substance of the meeting.

About Ordination and Licensure

Please note that Cherry Hill Seminary does not ordain graduates, but completion of Cherry Hill Seminary studies may qualify you to seek ordination by the religious group of your choice. Similarly, study at Cherry Hill Seminary will not, by itself, qualify you for licensure but may enhance your secular education in those disciplines. A degree from Cherry Hill Seminary is an educational credential; ordination is a religious one. Graduates may use their education as part of their qualifications for ordination by the organization or tradition they choose.

Academic Honors

A 3.0 G.P.A. is required of all our graduates in the Master's programs. Therefore, all our degreed graduates may be considered to have graduated with honors. A student who graduates with a 4.0 G.P.A. or above is considered to have graduated with distinction.

Mentorship Program

The process of education can be both transformative and challenging. Cherry Hill Seminary recognizes that the transforming effect of seminary education, combined with managing everyday life expectations, can at times be overwhelming. Students in seminary are expected to experience spiritual growth. This spiritual journey often takes one to a spiritual crossroads, and that experience can be confusing. Cherry Hill Seminary intends to journey with our students through our Mentorship Program.

The Mentorship program establishes mentors to work with students to help enrich their experience of seminary by focusing on the cultivation of their spiritual and emotional growth. The program does this by helping students integrate the knowledge gained through coursework and reflection on what has been learned. New students will likely meet with their mentors more frequently via phone or internet, but even as students progress through their coursework, they will always have access to a mentor who will walk with them in their journey.

The primary role of the mentor is to encourage, challenge and help our students process and understand the transforming elements of the seminary experience. All of our program mentors are seminary graduates themselves and have gone through their own transforming journey. They are individuals connected with the Cherry Hill Seminary community who accept the responsibility to be a guiding voice, and help to cultivate spiritual growth within our students.

Upon acceptance and matriculation, the Dean of Students will assign each incoming graduate student a mentor, and provide contact information to both the student and the mentor. Mentors will meet with their assigned students on the phone or internet several times throughout the semester at times mutually convenient, and help each assigned student develop a personal learning plan to address opportunities for growth. No grading is involved. Mentoring is confidential, and what is shared with a mentor is between the student and the mentor. As students meet with their mentors, the relationship between the two is expected to develop holistically as the student prepares for her or his life after seminary.

Other Requirements and Resources

Technical Competency and Preparedness

Cherry Hill Seminary is a distance education facility. At a minimum, all members of the Seminary community must meet the technical requirements below, which are subject to change upon recommendation of our technical support staff and the agreement of management.

All students must review the classroom training tutorial upon receiving access to the online classroom system. Students in a certificate or degree program are required to complete an orientation class; information about this class will be sent to newly-admitted students. Students are also responsible for signing up for a free account at Zoom.com for video class meetings.

1. Proficiency in and access to an up-to-date computer with a sound card, working computer sound card and a headset/microphone which plugs into your computer.
2. Reliable internet access .
3. Access to and responsibility for standard office software
4. Access to and responsibility for protection from viruses, etc.
5. Ability to attend and participate in online video class sessions.
6. Ability and willingness to follow the instructions given by tech support staff and to take responsibility for participating in the online tutorial.
7. Ability to attend and participate in online chat or conference call class sessions, as well as the willingness to adjust to these differing modes of communication.

Using Web-Based Meeting Platforms

An effective distance education format necessitates some form of technology to enable periodic direct interaction between student and instructor. Cherry Hill Seminary currently uses Zoom™ for online video

conferences. Use of Zoom is free to the student, but requires compliance with some simple matters in order to best serve both the individual and the group.

Students and instructors are encouraged to use a headset and/or ensure that background sound is minimized and sound quality is optimal.

Online Classroom

All classes have an online component. Populi is used for all records, Master's and Insights classes. Moodle is used for Community Ministry Certificate Program, Spiritual Directions Program, and houses our Library. Students will be required to follow instructions and login into both systems for their programs. Detailed instructions will be sent following registration.

About Class Format

Most classes include a mix of formats, such as (but not limited to) the following:

- Online forums with some combination of directive questions and free-form discussions, not in real-time; you can read and post to the forums whenever you have an internet connection.
- Forum posts may be required or optional; you may be given homework to post to a particular forum in a particular format. Forum posts may be read by the whole class.
- Some classes may require students to upload files of homework assignments.
- Live video and/or conference calls. Live meetings occur at a regularly-scheduled time with all participants present, in real-time from wherever they are; for example, a student in New York meets at 8 pm Eastern time with a student in California who is meeting at 5 pm Pacific time. Please note that you may not enroll in two classes that meet during overlapping scheduled times..
- Written assignments such as personal writing, a research paper, or an assignment to undertake some practical exercise or experiment and then write a report on that. These assignments will be uploaded to the class site, and may be seen only by the instructor or shared with classmates.
- Exams or quizzes, available only to the instructor.
- Field experiences of one kind or another, followed by discussion or a written report.
- Assigned reading or research, either in textbooks purchased by the student or in material posted or linked from the online classroom, or through independent work or the use of our online library resources (in Moodle).
- Downloading other audio or audio-visual components and responding to them.
- Research papers, which may require the student to cite published sources, to conduct personal interviews, to do independent research, to engage in personal reflection, or to work with other students as a team. Often research papers are required to be presented in a prescribed format such as APA, Chicago Manual of Style, or another professional or scholarly format (instructors are usually willing to offer guidance to students unfamiliar with their specific requirements).
- Creative, interactive or inventive projects, e.g., designing a workshop, producing art, music, dance, poetry, creating a ritual, etc.
- Some classes may require particular response formats, may have upper or lower limits for word count, or require that the student become familiar with specific types of tools, such as genograms, psychological tests, or professional databases for various disciplines.

Library Resources

The Judy Harrow Library and Information Center may be found in the online Moodle classroom. Questions may be addressed to librarian@cherryhillseminary.org.

Student Services

Upon matriculation, students receive detailed instructions on how to access the online classroom, how to access tech support, and are contacted by the Dean of Students, who provides guidance on course registration and next steps. This handbook includes detailed information about technology requirements.

Chaplain Services for Our Students

Members of our Seminary community have embarked upon a unique learning journey which, if successful, will prove to be a transformative experience. Transformation may involve change that is painful.

Furthermore, life goes on during the course of your education, so it is likely that some of our students will experience the death of loved ones, serious illness, divorce or other difficult life passages. Though our staff and faculty are less likely to have the kind of transformative educational and spiritual experiences faced by students during the course of their studies, nevertheless, life, and death, go on for them as well. Several of our experienced ministerial faculty are available for spiritual support should you need it during your time as a matriculated Cherry Hill Seminary student pursuing a certificate or degree, as an instructor or as a staff member. There is no charge for this service and it is not intended to replace your relationships with local clergy/spiritual leaders or your own therapist. If you find yourself in need of pastoral care – spiritual support, please contact one of our CHS Chaplains through the links given in the online classroom Chaplain's Office.

Advisement

All faculty and administration, including the Dean of Students, are available to meet individually with students to review their educational objectives, advise on course offerings, and discuss student engagement with her or his community, including internship placements or other projects.

Graduation

Upon successful completion of your Master's Degree requirements, contact your department chair to request that you be awarded your degree. Your chair and the Academic Dean will review your transcript to confirm that you have met all requirements, then make a formal recommendation, sending it to the Seminary office for your permanent file. The board of directors will vote to award your degree based on that recommendation.

Upon completion of the academic requirements and approval by the board of directors, your participation in a graduation ceremony may be scheduled. Please note that no diploma or certificate will be issued while you have an unpaid financial obligation to Cherry Hill Seminary. You are entitled to take classes after receiving your diploma at half tuition rate current at the time of the course.

The Seminary has typically held a graduation ceremony at an existing event or conference. If you are anticipating graduation and would like to have a public ceremony, contact the Seminary office to discuss possible options for a venue. We can also hold a virtual ceremony. You are not obligated to participate in a ceremony. We do, however, like to publicly celebrate your accomplishment, and so ask your permission to publish an announcement with your photograph in our newsletter.

Graduates usually purchase a black cap, gown, and hood from one of the many online vendors offering such merchandise. Trim and lining on the hood should be deep red like the Seminary logo. A deep red stole with the embroidered Cherry Hill Seminary official logo is exclusively designated for our Master of Divinity graduates. Contact the office for more information about where to commission a stole. Following graduation, you are entitled to add the initials M.Div. after your name.

Certificate Award

At this time, the Seminary does not hold a ceremony for Community Ministry Certificate graduates. We do, however, like to publicly celebrate your accomplishment, and so ask your permission to publish an announcement with your photograph in our newsletter.

If you have received your Community Ministry Certificate from Cherry Hill Seminary, you may commission a ministerial stole. A deep green stole with the embroidered Cherry Hill Seminary official logo is exclusively designated for our Community Ministry graduates. Contact the office for more information. Following award of your Community Ministry Certificate, you are entitled to add the initials CMC after your name.

Additional

You are welcome to add a logo and link to the Cherry Hill Seminary web site to your own web and social media presences. We appreciate your recognition of our programs. We believe that others will recognize the value of your degree or certificate, knowing of the rigor of Seminary programs. Of course, you may not represent yourself as faculty or staff.

Student Identification Card

A student identification card is not required for Seminary students because there is no campus facility at which to use one. However, some matriculated students may wish to obtain a valid Cherry Hill Seminary student identification card to obtain student discounts at a bookstore, for example. A link to order a card may be found on the web site under For Students/Materials.

Academic Calendar

The academic year calendar at Cherry Hill Seminary is divided into three 15-week academic terms: Fall, Spring, and Summer. A current calendar is on the Seminary website under For Students/Academic

Calendar. Students are responsible for consulting the calendar for important dates such as the opening of registration and drop/add deadlines.

Accessibility

Cherry Hill Seminary intends our classes to be accessible to students and instructors with various abilities and disabilities. As assistive technology is a rapidly changing field, we make no claim to have a “perfectly accessible” website at any time, although we continually work to improve and enhance our system. We ask our students, faculty, and staff to please make us aware of any accessibility problem, challenge, or issue in any of our web pages or classrooms. We gratefully accept suggestions for ways to make our classes more easily accessible to all.

Record Storage

Student records are stored in the main office of Cherry Hill Seminary in Columbia, S.C. Records are maintained electronically, as well as in hard copy. Both on-site and off-site electronic backups are maintained. The Executive Director, the Academic Dean and the Dean of Students are the only staff members with access to confidential records.

Transcript Requests

Upon graduation, each student will receive one complimentary student copy of his or her official transcript. Additional transcripts of a student's completed work at Cherry Hill Seminary will be provided upon written request and payment of a \$20 fee. Transcripts and diplomas will be held if the student's financial account with Cherry Hill Seminary has not been paid in full.

Cherry Hill Seminary complies with all requirements of the Family Educational Rights and Privacy Act Title 34 Part 99 of the Code of Federal Regulations) (FERPA). Questions concerning this law and Cherry Hill Seminary's procedures concerning release of academic information may be directed to the Cherry Hill Seminary office at CHS@cherryhillseminary.org or 1-888-503-4131.

Questions concerning FERPA may be directed to 202-260-3887 (voice), for TDD call the Federal Information Relay Service at 1-800-877-8339, or to the following address:

Family Policy Compliance Office
U.S. Department of Education
400 Maryland Avenue, SW
Washington, D.C. 20202-5920

Grievances

Cherry Hill Seminary recognizes that from time-to-time conflict arises in any organization. People sometimes find it necessary to clear up miscommunication, to speak truth to power, to recognize injustice and seek redress, to negotiate boundaries and settle disputes.

As a matter of policy, the members of the Cherry Hill Seminary community, whether students, faculty, administration, or governors, are encouraged to begin by speaking directly to the person involved. We recommend beginning the conversation in an informal way, naming what is true for you without labeling or judging the other person.

Perhaps that will be by face-to-face or voice-to-voice communication, or perhaps by email; but let it begin with a conversation limited to those directly involved. If this first step of speaking directly is not successful

in reaching resolution, or if the situation requires third-party intervention, then please take the second step of speaking with the next person up the hierarchical ladder.

For example, if a student has a dispute with another student, the second step would be to talk to an instructor whose class both students are taking. If a student has a dispute with a faculty member, the second step would be to speak with the department head. If a third step is needed, the person to contact would be the appropriate dean.

If a faculty member has a dispute with a student, the second step would be to contact the Dean of Students. For a dispute between faculty members the second step might be the department chair if they are in the same department, or the Academic Dean, if not.

Advocates can be appointed to assist and represent the parties to a dispute if needed. Senior administrators (i.e. the deans and Executive Director) will act in concert and may impose a settlement if resolution cannot be worked out among the aggrieved parties. Any appeal of an administrative decision will require a called committee composed of faculty and board members as appropriate.

Additional Policies

Communications

Cherry Hill Seminary's primary method of communicating with students, as well as providing forms, paperwork, and coursework, is electronic. Students are responsible for providing their email addresses to Cherry Hill Seminary during the application and registration process and for notifying the Seminary and each instructor of their current classes of any change of email address and other contact information. Calls to the office are automatically forwarded to voice mail; the preferred method of contact is email to CHS@cherryhillseminary.org.

Discrimination and Harassment

Cherry Hill Seminary prohibits discrimination on the basis of race, color, religion, creed, sex, age, marital status, national origin, mental or physical disability, political belief or affiliation, veteran status, sexual orientation, gender expression and any other class of individuals protected from discrimination under state or federal law in any aspect of the access to, admission, or treatment of students in its programs and activities, or in employment and application for employment. Furthermore, Cherry Hill Seminary policy prohibits harassment of students and employees, i.e., racial harassment, sexual harassment, and retaliation for filing complaints of discrimination. Candace Kant is our Harassment Officer, and may be contacted at ckant@cherryhillseminary.org.

Confidentiality

Cherry Hill Seminary will disclose information from a student's education records only with the written consent of the student, except:

1. To school officials with legitimate educational interests. A school official is a person employed by Cherry Hill Seminary in an administrative, supervisory, academic, research, or support staff position; a person or company with whom Cherry Hill Seminary has contracted (such as an attorney, auditor, or collection agent); a person serving on the Board of Trustees; or a student serving on an official committee, such as a disciplinary or grievance committee, or assisting another school official in performing his or her tasks. A school official has a legitimate

- educational interest if the official needs to review an education record in order to fulfill his or her professional responsibility.
2. To officials of other institutions in which the student seeks or intends to enroll, provided that the student has previously requested a release of his/her record.
 3. To authorized representatives of the U.S. Department of Education, the Comptroller General of the United States, state educational authorities, organizations conducting studies for or on behalf of the Seminary, and accrediting organizations.
 4. In connection with a student's application for, and receipt of, financial aid.
 5. To comply with a judicial order or lawfully issued subpoena.
 6. To parents of dependent students as defined by the Internal Revenue Code, Section 152.
 7. To appropriate parties in a health or safety emergency.
 8. To the alleged victim of any crime of violence by a Cherry Hill Seminary student, instructor or staff member, the results of any related disciplinary proceedings conducted by the Seminary.
 9. Cherry Hill Seminary may disclose the result of a disciplinary proceeding to a parent or guardian so long as the student is under the age of 21 at the time of the incident and the incident involved violation of any federal, state, or local law.
 10. To students currently registered in a particular class, the names and email addresses of others on the roster may be disclosed in order to facilitate class discussion.

In addition to our policy about the Seminary's disclosure of student information, the Student Conduct policy includes the following statement about confidentiality:

Student emails, addresses, and such personal information as students may discover about each other may be used only for purposes of networking within the Seminary. Use for solicitation, fundraising, advertising, promotion, or any type of commercial purpose is specifically prohibited without written permission from the Seminary. Violation of this policy may be grounds for dismissal from Cherry Hill Seminary.

Compliance With Federal Regulations

Cherry Hill Seminary offers equal opportunity in employment, admissions and educational activities in compliance with civil rights laws set out below:

The Family Educational Rights and Privacy Act (FERPA)

The Family Educational Rights and Privacy Act (FERPA) (20 U.S.C. § 1232g; 34 CFR Part 99) is a Federal law that protects the privacy of student education records. The law applies to all schools that receive funds under an applicable program of the U.S. Department of Education.

FERPA gives parents certain rights with respect to their children's education records. These rights transfer to the student when he or she reaches the age of 18 or attends a school beyond the high school level. Students to whom the rights have transferred are "eligible students." Additional information regarding FERPA regulations may be found at the following web address:

<http://www2.ed.gov/policy/gen/guid/fpco/ferpa/index.html>

Students have the right to inspect their educational records with certain exceptions. If they

believe these records are inaccurate, they may request an amendment and, if denied, have the right to a hearing and to place a letter of disagreement in their file if the outcome of that hearing is negative. Students are eligible under the Act to file a complaint with the U.S. Department of Education Family Policy and Regulations Office, Federal Office Building Number 6, Room 3021, 400 Maryland Ave., S.W., Washington, DC 20202, if they believe Cherry Hill Seminary failed to comply with the requirements of the Act.

Cherry Hill Seminary's policies and procedures for implementation of the Act are enumerated in the Notification of Student Rights Regarding Educational Records, copies of which are available to students at by request to the administration office.

The Seminary does not release personally identifiable information contained in student educational records except as authorized by law.

Section V of University Policy Against Discrimination, Articles of Incorporation of 1869

"No instructor in said University shall ever be required by the Trustees to have any particular complexion or to possess any particular religious opinion as a test of office, and no student shall be refused admission to, or be denied any of the privileges, honors, or degrees of said University on account of race, complexion, or religious opinions which he may entertain; Provided, nevertheless, that this section, in reference only to religious opinions, shall not apply to the theological department of said University."

Title VI of the Civil Rights Act of 1964

"No person in the United States shall, on the ground of race, color, or national origin, be excluded from participation in, be denied the benefits of, or be subjected to discrimination under any program or activity receiving federal financial assistance."

Title IX of the Education Amendment of 1972

"No person in the United States shall, on the basis of sex, be excluded from participation in, be denied the benefits of, or be subjected to discrimination under any educational program or activity receiving federal financial assistance."

Section 303 of the Age Discrimination Act of 1975

"No person in the United States shall, on the basis of age, be excluded from participation in, be denied the benefits of, or be subjected to discrimination under any program or activity receiving federal financial assistance."

Section 504 of the Rehabilitation Act of 1973

"No otherwise qualified handicapped individual in the United States . . . shall, solely by reason of his handicap, be excluded from the participation in, be denied the benefits of, or be subjected to discrimination under any program or activity receiving federal financial assistance."

Academic Honesty and Student Conduct

Progress in your program

Cherry Hill Seminary expects each student to take responsibility for knowing the information contained in this handbook and the Cherry Hill Seminary website www.cherryhillseminary.org, including all policies that affect your program of study and participation in Seminary activities. While faculty advisors are always

available to assist and advise, you are expected to monitor your own progress toward the degree or certificate of your choice. In particular, you are responsible for keeping your own records, including all records of official grades earned, copies of student papers and posted homework regardless of format, and all official communications to or from Seminary administration. You are responsible for keeping copies of the syllabi of all courses and classes. Most importantly, you are responsible for proper completion of the requirements of your program as published in the handbook at the time of your admission (or more recently).

Communicating with Cherry Hill Seminary

Each student is responsible for current and timely communication with Cherry Hill Seminary. It is your responsibility to respond to all communications from Cherry Hill Seminary administrators or faculty in a timely manner. It is also your responsibility to promptly communicate to the Seminary any change in your student status. Such changes include, but are not limited to, need for a leave of absence, desire to withdraw from a class, request for change of major or change of degree or certificate program, change of address or email address, change of name. All forms are found on the main web site, under For Students/Materials.

Student Identity

In a distance education program, assuring the identity of participating students is required in order to comply with the United States Federal Higher Education Opportunity Act (HEOA) of 2008. Each student will be given an individual secure login and password to the online classroom, which should not be shared. Students are required to post at least one assignment (this may include forum discussion posts) in the first seven days of the course, and instructors are required to verify that the assignment is completed. Finally, student identity is confirmed by participation in online video class meetings, where every student participates in discussions and presentations.

Absences in an online setting

Cherry Hill Seminary recognizes that our students are adults, most of whom have complex work lives and family lives, in addition to religious and spiritual practices and responsibilities. From time to time, Seminary study will be found to take a back seat to other parts of a student's life. There is no shame in this, but the student is responsible for promptly communicating with the Seminary when life is getting in the way of studies. An email to your instructor will often be sufficient in short-term situations.

Students who plan to be offline for longer than seven (7) days during a class term should notify their instructors in advance. Your participation may be crucial to the learning of other students, not just to your own development. In the larger world, seminarians and chaplains are expected to take responsibility for showing up or for providing coverage when they cannot.

Students who, without prearrangement, fail to respond to emails from faculty or staff within one week may be subject to disciplinary action. Students who cease to participate in classes without notifying the instructor in advance will find their course grade materially affected, with resulting damage to their GPA. The student will find it preferable to officially withdraw from a course rather than simply disappear from the classroom.

Should you find it necessary to withdraw from a class, it is imperative that you email both your instructor and the Executive Director. Failure to formally withdraw will result in a grade of NC, which will add three or more hours of "zero" to your Grade Point Average.

Academic probation

A student who disappears from the classroom without communicating with the instructor and fails to formally withdraw will be placed on Academic Probation.

A student who fails classes in two consecutive semesters will be placed on Academic Probation.

A student who is on Academic Probation will be required to complete a semester at a 3.0 GPA or better before the probation will be lifted. A student whose performance continues to be below minimum standards may be dropped from the degree or certificate program at the discretion of the department chair.

Use of personal information

Student emails, addresses, and such personal information as students may discover about each other may be used only for purposes of networking within the Seminary. Use for solicitation, fundraising, advertising, promotion, or any type of commercial purpose is specifically prohibited without written permission from the Seminary. Violation of this policy may be grounds for dismissal from Cherry Hill Seminary.

Dismissal from Cherry Hill Seminary

As noted above, a student may be dismissed from Cherry Hill Seminary for persistent academic performance below standard (see Academic Probation, above) or for violating other students' rights to privacy (see Student Responsibility for Privacy, above).

Other grounds for dismissal from Cherry Hill Seminary may include, but are not limited to, such actions as:

- Misrepresenting yourself, your previous education, your experience, or your connection with Cherry Hill Seminary;
- Misrepresenting the quality or quantity of your studies;
- Plagiarism or academic dishonesty;
- Consistent failure to complete course requirements;
- Founded allegations of harassment or violence;
- Conviction for a felony must be disclosed to your academic advisor(s) prior to graduation and may be taken into consideration before approval of the award of a Master of Divinity degree.

Plagiarism

Cherry Hill Seminary maintains a zero-tolerance policy regarding plagiarism and other forms of academic dishonesty. Sanctions for violation of this policy will include a rehabilitative, reparative and punitive aspect depending on the nature and severity of the violation, the nature and severity of the harm caused.

Specific sanctions may include expulsion from Cherry Hill Seminary, probationary regulation of conditionally continued enrollment and/or reporting to appropriate law enforcement authorities. Cherry Hill Seminary will assess reported violations and determine sanctions in accordance with our values, which inform our policies on academic and personal integrity.

Classroom Disruption Policy

Instruction at CHS is conducted for the common good, with the aim of facilitating learning. Disruptive and/or abusive conduct inside a class can stifle the candid scholarly discourse required for exploration of divergent views, preventing all in a class from obtaining a meaningful learning experience. Similar behavior outside the classroom creates a hostile work environment. Disruptive and abusive behaviors are inconsistent with the purposes, values, and vision of Cherry Hill Seminary. Furthermore, academic

freedom can exist only when every person is free to pursue ideas in a non-threatening atmosphere of mutual respect.

In light of our values and our vision, Cherry Hill Seminary is committed to creating and protecting academic freedom, standards of civility and an environment conducive to learning. Both faculty and students are expected to maintain an environment that is conducive to learning. Faculty and students should treat each other with understanding and respect.

Faculty have the further responsibility of guiding classroom discussion and setting reasonable limits on the manner in which students express their opinions and interact with each other. Students who fail to adhere to reasonable behavioral standards may be subject to discipline. The following policy and procedures will provide guidance to faculty and staff in handling incidents of problematic behavior encountered in our Seminary community.

Definitions

- The term “student” means any person participating in a Cherry Hill Seminary course, either full time or part time.
- The term “faculty” means any instructor or academic staff of a Cherry Hill Seminary course, in any department.

Prohibited Conduct

- The disruption, obstruction, or unauthorized interruption of class sessions, conferences, meetings, or any other institution.
- Conduct that endangers the health or safety of any member of the Seminary community.
- Physical abuse, verbal abuse, intimidation, coercion, *ad hominem* insults, and threats, whether physical, verbal, or written, regardless of the medium in which the threat is made or repeated.
- Argument that goes beyond the scope of the topic under discussion after having been warned by the instructor.

Procedures

- The faculty member will inform the student verbally and/or in electronic communication that the behavior is disruptive, is impeding the educational processes of the class or advising meeting and will not be tolerated.
- If, after this initial communication, the disruptive behavior continues, the faculty member has the right to disconnect the student from the classroom or other Seminary meeting.
- If a student has been disconnected from the classroom or other Seminary meeting the faculty member will immediately send an email to the Dean of Students informing the Dean of Students of the disconnection and describing the behavior that led to this decision.
- The faculty member will next send an email to the student informing them that they have been disconnected from the classroom or other Seminary meeting, explaining why their behavior led to this decision. The faculty member will then, in the same email, offer to meet with the student before the next class or advising session to determine if the student may be re-installed in the classroom.
- Should the student wish to be re-installed in the classroom or advising session, and the faculty member and the student come to an agreement about the reinstallation, the faculty member will so inform the Dean of Students. The student will also send to the faculty member, with a copy to the Dean of Students, an email confirming that the student has agreed to cease the disruptive behavior and wishes to be re-installed in the classroom or continue the advising session.
- Should reinstallation of the student in the classroom or other meeting result in continued

disruptive behavior, the faculty member will immediately contact the Dean of Students.

- The Dean of Students will immediately place the student on probation.
- The Dean of Students will then arrange a meeting with the student, the faculty member, and the Dean of Students.
- Following the meeting of the student, faculty member and Dean of Students, the Dean of Students will determine whether a student will be reinstated in the classroom or other Seminary meeting or removed permanently from that class.
- Should a student be removed from two different classes, the student will be expelled from Cherry Hill Seminary.

Additional

- Students who leave the institution before a conduct matter is resolved may be prohibited from future enrollment until such time as the matter is resolved.
- No course refund will be issued to a student who is removed from class for disruptive or abusive conduct.
- In the event that a student who has been disconnected from a classroom or other Seminary meeting fails to respond to the communications outlined in Procedures, above, within fourteen (14) days, the student will be removed permanently from that class, with no further appeal.

Course Catalog

Students from any department pursuing a degree are required to take the following four core courses.

Course Codes

Following is the schedule by which most Cherry Hill Seminary graduate courses are coded. As we continue to refine and build our catalog, some courses may change codes. The letter in the first digit indicates the department/track. The second digit refers to the class level.

C	Core Curriculum (Seminary-wide requirement)
M	Department of Ministry, Advocacy & Leadership
P	Department of Pastoral Counseling and Chaplaincy
T	Department of Theology and Religious History
I	Academic Intensive
XX	Insights

5000 Level Courses are graduate level “survey” or introductory courses. These courses are taught by various faculty. Students demonstrate mastery by meeting specified academic criteria and by class participation. Some classes may require two or more successfully completed semesters of sequentially numbered courses for credit. Some may have prerequisites or require instructor approval prior to the beginning of class.

6000 Level Courses go into depth in a particular subset of a field. 6000 level courses are usually taught by faculty specialists. Students demonstrate their mastery by meeting academic, participation and best practice standards in the specific field. These courses often have 5000-level and/or core curriculum prerequisites and/or require instructor approval.

7000 Level Courses are for students working on a Master's of Divinity and require approval by the professor and Department Chair. These may include internships and supervision or consultation with non-Seminary personnel as appropriate.

Credit Hours

Unless otherwise noted, master’s courses earn three credit hours and last for a 15-week semester. Generally, the student should expect a workload of approximately 8-12 hours per week, including 40-60 pages of reading.

Required Core Courses

C5101 Ethics and Boundaries

When we engage in professional Pagan ministry, we are not only practitioners of our craft, we are representatives of our religion. We are held radically responsible for our actions and their consequences by our deities, our communities, our world and ourselves. We live and work in a society where actions we take as Pagans are viewed through the lens of a different set of assumptions than our own. This course will examine ethics and boundaries relating to self, to clan/tribe, to society and to our world, from both Pagan and non-Pagan perspectives. Students will develop individual codes of ethics and articulate personal boundaries.

C5121 Contemporary Global Paganisms

A survey course introduces students to the wide variety of Paganisms being practiced around the world, challenging scholarly and personal definitions of Paganism by tracing common threads among disparate traditions. Students will then explore the Internet and their local communities to gain first-hand experience with traditions not their own. We will deal with issues of cultural appropriation versus appropriate cultural borrowing and consider Paganism's position as a consciously (re)constructed, combinative religious path. A final project will allow students to synthesize their knowledge in a comparison of Paganisms that supports the unique thrust of each student's ministerial path.

C5131 Spiritual Formation

The spiritual quest is the work of the human person engaging the life force and the soul enlivening one's life. This course places creativity at the center of what the spiritual quest means for each student as our means of investigation, practice and reflection. It links theory and practice in personal spiritual growth, philosophy of formation and Pagan ministry in a way that is academically informed, honors the Earth and all life, and is communally relevant. This core course focuses on a holistic spirituality—nurturing body, mind and soul life, creating a dialogue between those practices of tradition, personal health and relationships, and the concerns of ministry.

C5141 Pagan Theology

Theology—the study of Deity—calls us to make connections between reason and experience, history and contemporary life, and between our own traditions and practices and those of others. It is something we *do*—a practice by which we grow in deeper understanding of our relationships with the divine and others, not a matter of mere theory. In this class, we will explore and refine our personal theologies through encounters with significant voices in Paganism, the Western occult tradition, and earth-centered and feminist Christianity/post-Christianity, as well as develop expertise with theological terminology. Students will develop skills to engage in informed and intelligent theological discussions with clergy from other religious tradition. Prerequisite: C5101 Ethics and Boundaries OR C5121 Contemporary Global Paganisms OR permission of the instructor

C5151 Research Design and Methodology

Introduction to research methods, statistical analysis, needs assessment, and program evaluation, including the importance of research in advancing the counseling profession; research methods such as qualitative, quantitative, single-case designs, action research, and outcome-based research; statistical methods used in conducting research and program evaluation; principles, models, and applications of needs assessment, program evaluation, and the use of findings to effect program modifications; the use of research to inform evidence-based practice; and ethical and culturally relevant strategies for interpreting and reporting the results of research and/or program evaluation studies. APA style is required in papers.

C5161 Interfaith Leadership

Religions both unites and divides us in today's multicultural and constantly changing society. The modern interfaith movement is said to have started at the 1893 Parliament of World Religions with religious groups meeting and getting to know each other, many for the first time. But recognizing the explosion of diversity students will encounter after graduation, has prompted growing numbers of universities to add curricula requirements which provide interreligious awareness and interfaith leadership skills. Interfaith leadership is a highly-interactive and experiential semester of community as well as self- exploration which recognizes the ways that religion and interreligious encounters are embedded in today's cultural, political and economic systems, analyzes the intersections of religions and society in order to improve outcomes, and allows the student to develop a personal theology of interfaith cooperation.

Ministry, Advocacy and Leadership Courses

M5002 Children, Youth & Teens in Contemporary Paganism

Students consider the ways individual parents and communities across various Pagan traditions perceive, teach and include their children in their spiritual practices, then go on to consider engagement of young people and teens on a spiritual level. This course prepares Pagan leaders to be able to develop age-appropriate activities and resources for their communities. Students will explore existing effective programs for Pagan religious education, and create original materials to serve youths and teens in the age-related challenges they face, through rites of passage and other coming of age ceremonies, as well as appropriate bridging ceremonies and programs, and campus ministry.

M5100 Advocacy for Social Justice

Social justice is the movement towards a more socially just world through the actions of a group of individuals working together to achieve its goals. The course will introduce students to key thinkers, ideas and activists, as well as debates on topics such as poverty, racism, colonization, and the rights of indigenous peoples. It will examine various social movements that have led to changes in society and the skills needed to work for social change. Students will be challenged to identify and catalog theologies and spiritualities of engagement as they are expressed in world religious traditions, to identify those values in their own traditions which call for engagement, and to craft for themselves a working statement of spiritual engagement based on their own practices and cultural contexts.

M5241 Rites of Passage

Birth, death, wedding-handfasting, coming of age, divorce – understanding these transitional moments in the life cycle and how to prepare for them will enable the Pagan minister to guide others through the times that define our lives. Learn to follow legal guidelines when necessary, bridge gaps between Pagan and non-Pagan friends and family, and still help to create ritual that is deep, meaningful and abiding.

M5325 Liturgical Design: Beyond the Wheel of the Year

Study of extant liturgical practice in contemporary Paganism and development of seasonal celebrations and rites of passage. Liturgical terminology from theological discourse is defined and applied to Paganism to broaden ability for interfaith engagement. In a Pagan context, studies will explore the mythos cycles upon which many traditions build their liturgical year, as well as the structure of ritual itself. In critically analyzing ritual structure, students will develop theories about what makes “good” ritual, with the intent of applying those theories to rituals created for this course. Final project is a collection of original rituals-devotional, petitionary, and benedictory-created by the student.

M5560 Leadership I

Some choose the role of leader and some lead out of necessity. Moving beyond “being in charge” to real leadership requires personal reflection and development, strong communications skills, knowledge of advocacy, problem-solving and bridge-building, and the willingness and ability to develop the leadership potential in others. Students learn to set goals, inspire and involve others, develop collaboration, and serve as positive role models.

M5561 Nonprofit Management

Pagans throughout the U.S. and beyond are finding that one effective way to achieve their ministry goals is through a nonprofit organization. Pagans are also entitled to the same organizational benefits enjoyed by churches and synagogues. A nonprofit is much like a business, but with a different bottom line – rather than a financial profit,

nonprofits work for changed lives and strengthened communities. Students will cover the basics of forming a Pagan nonprofit, board governance, the basics of management, legal and ethical issues, the basics of fundraising and how to create a fundraising plan, and the basics of branding and communication.

M5900 The Art and Craft of Sacred Speech: Homiletics

Pagan clergy, as all clergy, are called to speak to, for and about the religious community. An exploration of authentic preaching as a ministry of exhortation, encouragement, teaching and working with energies always present in ritual, we aim to cultivate these ministries and the individual gifts of the preacher. Emphasis is placed on identity, presence, as well as the power of story within narrative and non-narrative preaching. Explore the preparation and delivery of messages in sacred context and the understanding of what it means to speak and proclaim truth from an authentic sense of the community's values that inspires, edifies, and challenges others.

M5998 Special Topics in Ministry, Advocacy, and Leadership

Study of a selected issue or topic of significance to Ministry, Advocacy, or Leadership. The topic will vary; however, the intent of the study is to develop a knowledge of, appreciation for, and skill needed in the complexities of Ministry, Advocacy, or Leadership. Materials for the study will be drawn from a wide variety of sources and may be interdisciplinary in nature.

M5999 Capstone Project (formerly Praxis)

Capstone Project is required for all Master's students and should be undertaken promptly after half the credits toward the degree have been completed. Capstone Project is worth one credit toward the degree and, as such, must involve 45 hours of work. Capstone Project may include community service, field research, library research, creation of educational curricula, ritual design, creative writing, and more. Regardless of the nature of the project, the student will be expected to produce a written, visuals or audio summary of it that can be shared with other students and faculty in the Capstone Project classroom, where a contract between the student and faculty advisor outlining goals, responsibilities and meetings will be posted. Prerequisite: All required core courses.

M6205 Crisis Intervention & Conflict Resolution

Ministers, pastoral counselors and chaplains will inevitably encounter crisis or emergency situations, as well as conflicts requiring de-escalation, and situations where post-emergency counseling and support are required. This course explores crisis intervention techniques and principles of conflict resolution with an emphasis on effective communication and interpersonal skills in emergency or post-emergency situations. provides various methodologies and a variety of flexible models for use with diverse environments, situations and populations, both within and outside of the judicial system. Students acquire skills in dispute and conflict resolution for individuals and small groups, such as families, spiritual organizations or communities, as well as interreligious and secular venues. (Same as P6205)

M6270 Nature & Pagan Spirituality

Pagan spirituality is intertwined with an emerging re-examination of human relationships with the natural environment. This class provides students an opportunity to examine recent thought in eco-theology, environmental ethics, and nature spirituality as resources for reflection on Pagan spirituality, particularly as it concerns relationships with nature. Students will examine key writers, both those who write from a Pagan perspective and those who come from allied perspectives like deep ecology and ecofeminism, reflect on the concepts developed by those writers. Students will assess the role of nature in their own ministry and that of their particular communities, and will produce critical and constructive writing on nature religion and nature spirituality. Prerequisite: None; C5141: Pagan Theology recommended.

M6560 Leadership II

What defines a Pagan leader? Being famous? Being articulate? Having a blog or writing a book? Outstanding leadership is unique. It requires understanding the stages of group development, the dynamics of member interactions and factors in group failure or success. It also requires a good understanding of one's own motives, strengths and weaknesses. Students do a self-evaluation and learn advanced leadership techniques for practical use in groups to which they already belong, or plan to organize. They will develop and practice skills that better prepare a group leader to deal with group issues, and lead more effective, cohesive and productive groups. Prerequisite : M5560 Leadership I.

M6650 Paganism & the Body

Declaring that all acts of love and pleasure are the rituals of the Goddess, contemporary Pagans widely affirm the sacredness of the body and of sexuality. Students will engage with theological and ethical writings around gender, sexuality, and the body from Pagan and allied perspectives, with special attention to relationships that are marginalized by mainstream society. The role of gender polarity and sex magic in the Western esoteric tradition and its influences on religious witchcraft will also be considered. Students will examine their conceptions of gender and sexuality and develop their own theologies of the body. Students will also consider ministering to a sexually diverse Pagan community. Prerequisite: None; C 5141: Introduction to Pagan Theology recommended.

M6990 Independent Study

Directed study in a special area of interest by instructor permission only. Work may include writing in response to readings; discussion of material with instructor; field research; creation and presentation of rituals, classes, etc.; or other appropriate activities. Culminates in a project or research paper. Students may contact instructors with a study proposal, including reading list, project idea, and reference from a past CHS instructor indicating student's readiness for one-on-one directed study. If the proposal is accepted, the instructor will assist the student in constructing a schedule and appropriate requirements; the resulting syllabus will be approved by the department head. Directed study should involve approximately 135 hours of work. Prerequisites: All six Core courses must be completed.

M7201 Internship I

Community Placement under local supervision in either a clinical or pastoral setting. The student will be on the placement site for at least 135 hours, and the internship should be completed in one academic semester. Students are required to seek their own placement well before the semester begins, discuss it with the chair of the department before enrolling, and ensure that the Internship contract is signed at the beginning of the semester by both the student and the individual who will be supervising the internship on site. Prerequisite: 5999 Capstone Project (formerly Praxis)

M7202 Internship II

Continuation of M7201 or A7202 and should, if at all possible, be at the same site where the former was completed.

M7900 Thesis

The MAL Master's thesis provides the student an opportunity for mature integration of the head, heart and hands of Pagan Divinity Studies. Under the supervision of a thesis director and committee, its main feature is the research and writing of a thesis focusing on the student's central area of concern while resourcing all other areas of study at Cherry Hill Seminary. Because this kind of work is more than merely academic, the final thesis should integrate the theories, philosophies and theologies embraced by the student with practices and experiences that help the student make them real. For specific guidelines, please check the CHS online Library in Moodle.

M7901 Thesis II

Optional continuation of M7900 Thesis I.

Pastoral Counseling and Chaplaincy Courses

P5102 Pastoral Counseling

Pastoral counseling is a unique form of counseling which uses spiritual resources as well as psychological understanding for healing and growth. It is provided by certified pastoral counselors, who are not only mental health professionals but who have also had in-depth religious and/or theological training. Students explore the opportunities and limits of Pagan pastoral counseling, what it is and what it is not, and trace the history of pastoral counseling as distinguished from psychotherapy, pastoral care, chaplaincy and spiritual guidance. Addresses professional issues and develops a Pagan perspective to pastoral counseling.

P5104 Psychopathology: Creativity, Madness and the Pagan Spirit

Psychopathology will be explored from a spiritual/Pagan perspective. Students learn diagnosis as it is currently applied and spiritual/Pagan approaches to diagnosis and alternative states of consciousness. Required for Pastoral Counseling and Chaplaincy students.

P5105 Human Development Across the Life Span in a Pagan Context

Students will study psychological development throughout the human lifespan. For each stage of development, students will consider the ways in which a Pagan lifestyle and a Pagan worldview may affect an individual's physical, cognitive, social, and personality development. This course provides clergy with developmental information that can be applied to age-related ritual design, curriculum, and counseling.

P5106 Personality Theories

This is an in-depth survey of the theories of personality, presenting major theorists who represent the psychoanalytic, neopsychoanalytic, life-span. Trait, humanistic, cognitive, behavioral and social-learning approaches, as well as clinical and experimental work. The course will also explore how race, gender and culture issues figure in the study of personality and in personality assessment. Finally, we will briefly examine some of the issues of: genetics, environment, learning, parental influences, developmental aspects, consciousness and unconscious influences.

P5108 Diversity in Counseling and Advocacy

What are the issues raised for Pagans when working as counselor or advocate with socially and culturally diverse populations in secular and interfaith venues? This is a skills development course designed to strengthen multicultural theoretical and awareness. We examine the impact of various cultural factors on personality, value systems, access to services, and spirituality, in order to understand societal changes, norms, mores and differing lifestyles and the influence of culture and social change on family relationships, gender equity, individual adjustment and the ability to advocate for self in secular and interfaith venues. Students examine their own attitudes, belief systems, and behaviors, with the goal of developing cultural competence.

P5203 Death, Dying and Grieving: Call of the Dark Mother

This is a survey course about end-of-life issues, death, dying and grieving, to better prepare Pagans who hear the call to this sacred work, and for those who encounter it as part of their overall priest/esshood. Death is a natural part of the cycle of life, but it is often the most challenging part of our ministry. We may be called upon to work with the dying, to counsel those who are tending to the dying, to officiate at funerals and memorials, to intercede in situations where there may be conflicting faith traditions, to respect the dying and all the mourners, and to counsel the bereaved. We will also look, briefly, at the funeral industry and alternatives.

P5204 Stress, Trauma and Self-Care for Pagans

Students will explore the issues of stress, trauma and self-care as they relate to pastoral counseling and chaplaincy. Stress and trauma arise in many different settings, including disasters, combat situations and military family life. Counselors and chaplains need to understand the normative responses to stress and trauma in order to recognize problematic responses, including post-traumatic stress disorder. We will look at burnout, compassion fatigue, vicarious trauma, secondary traumatic stress syndrome and the self-care that will prevent or alleviate the symptoms of these conditions. Students are expected to create their own self-care plan as they prepare to care for clients who have experienced stress and trauma.

P5301 Introduction to Chaplaincy

What is the difference between a minister and a chaplain? This is an opportunity to explore an overview of the range of venues for ministry, and the unique interfaith role of the chaplain in institutional settings. Students will become familiar with the global and historical context for chaplaincy, the community circle of chaplaincy, interfaith dialogue and its meaning for modern Pagans. Students will learn how to effectively function in this specialized ministry by sharing knowledge, understanding, acceptance and respect, as well as working to protect and promote free expression of religion for all faith formations, collective and individual. *Same course as M5301.*

P5998 Special Topics in Pastoral Counseling and Chaplaincy

Study of a selected issue or topic of significance to Pastoral Counseling or Chaplaincy. The topic will vary; however, the intent of the study is to develop a knowledge of, appreciation for, and skills needed in the complexities of Pastoral Counseling and Chaplaincy. Materials for the study will be drawn from a wide variety of sources and may be interdisciplinary in nature.

P5999 Capstone Project

Capstone Project is required for all Master's students and should be undertaken promptly after half the credits toward the degree have been completed. Capstone Project is worth one credit toward the degree and, as such, must involve 45 hours of work. Capstone Project may include community service, field research, library research, creation of educational curricula, ritual design, creative writing, and more. Regardless of the nature of the project, the student will be expected to produce a written, visuals or audio summary of it that can be shared with other students and faculty in the Capstone Project classroom, where a contract between the student and faculty advisor outlining goals, responsibilities and meetings will be posted.

P6101 Counseling Theories

Survey of Counseling Theories will explore the historical origins and evolution of contemporary models of psychotherapy and counseling, and current professional research and practice in the field. The student will learn various intervention modalities that may be applied to similar client presentations, and gain insights on how to tailor the most appropriate

intervention for a specific client, and develop his/her personal paradigm for counseling. Spiritual issues are often an integral but subtle part of counseling process; students will enhance their abilities to recognize and address these issues from a Pagan perspective. Prerequisite: P5106, Personality Theories, or permission of instructor.

P6201 Counseling Skills and Therapeutic Interventions

Students learn counseling skills including development of basic rapport, active listening and effective use of questions. Psychotherapeutic interventions for specific populations and to address a variety of psychological issues are explored. Students begin to practice counseling skills with each other and with non-clinical populations.

Prerequisite: P6101, Counseling Theories, or permission of instructor.

P6202 Group Theory and Dynamics

Designed to assist Group Leaders in understanding the stages of group development, the dynamics of member interactions and what makes a group succeed or fail. Through exercises, class interaction, readings and written assignments, students will learn to put various techniques to practical use in groups to which they already belong or plan to organize. With the development of these skills, the Group Leader will be better prepared to deal with group issues and lead more effective, cohesive and productive groups.

P6203 Sages and Crones: Ministry to and for Older People

The age profile of the Pagan community is rapidly evolving as those who became active Pagans in the 1970s reach the last third of life. Support for older Pagans will become an increasingly important issue. Students will learn to help people meet the challenge of old age and develop models of spiritual development and maturity that can point the way to how the last third of life can be lived in a fulfilling and constructive way. Core topics include rites of passage into eldership, venerating deities of age and wisdom, support for older community members, the role of elders in the Pagan community and developing Pagan models of spiritual maturity. Same course as M6020.

P6205 Crisis Intervention and Conflict Resolution

Ministers, pastoral counselors and chaplains will inevitably encounter crisis or emergency situations, as well as conflicts requiring de-escalation, and situations where post-emergency counseling and support are required. This course explores crisis intervention techniques and principles of conflict resolution with an emphasis on effective communication and interpersonal skills in emergency or post-emergency situations. provides various methodologies and a variety of flexible models for use with diverse environments, situations and populations, both within and outside of the judicial system. Students acquire skills in dispute and conflict resolution for individuals and small groups, such as families, spiritual organizations or communities, as well as interreligious and secular venues. (Same as M5570)

P6206 Psychological Assessment

This is an introduction to tests, measurement, and research as tools for the Pagan pastoral counselor. Students will learn the possibilities and limitations of various testing instruments, and gain an understanding of academic research findings derived from those instruments. They will then explore the application of these tools for their Pagan constituencies.

P6207 Psychology of Religion and Paganism

Students will explore the application of psychological principles and research to religion in general, and Paganism in particular. This course will provide clergy with a basic understanding of psychology, which enhances later study in counseling and curriculum development.

P6301 Trauma-informed Spiritual care and Chaplaincy

Trauma-Informed Spiritual Care and Chaplaincy is designed to bring knowledge and understanding to the implicit and explicit impacts of traumas alive in those receiving spiritual care for healing and growth. This course is facilitated by board certified chaplains and licensed professional counselors specializing in treating trauma, who have in-depth clinical and theological training. In this course, we will explore the various types of trauma, the way trauma is embodied in the mind and body, cognitive vs. nervous-system trauma processing, real vs. perceived trauma processing, and differences between Complex Post-Traumatic Stress Disorder and Post-Traumatic Stress Disorder. We will address how to engage with and de-escalate trauma responses and develop a Pagan perspective on Trauma-Informed Spiritual Care and Chaplaincy.

Prerequisite: None.

P6305 Transpersonal Psychology**P6990 Independent Study**

Directed study in a special area of interest by instructor permission only. Work may include writing in response to readings; discussion of material with instructor; field research; creation and presentation of rituals, classes, etc.; or other appropriate activities. Culminates in a project or research paper. Students may contact instructors with a study proposal, including reading list, project idea, and reference from a past CHS instructor indicating student's readiness for one-on-one directed study. If the proposal is accepted, the instructor will assist the student in constructing a schedule and appropriate requirements; the resulting syllabus will be approved by the department head. Directed study should involve approximately 135 hours of work. Prerequisites: All six Core courses must be completed.

P6700 Sexuality, Culture & Religion

This course will examine human sexuality in the context of culture and religion in an academic and unbiased format. Beyond the boundaries of our dominant culture, there are beliefs, customs and practices that, to us, may appear taboo, offensive or even illegal. Within the culture that spawned those beliefs, customs and practices, they constitute the social norm. Students aspiring to minister in specialized and multicultural settings must be aware of and sensitive to the diversity human sexuality and experience. *Same course as M6700.*

P7201 Internship I

Three- unit, one semester course for majors in the Master of Divinity Degrees in Pastoral Counseling and Chaplaincy constitutes the first half of the required six-unit internship. Students are required to seek their own community placement in either a clinical or pastoral setting well before the semester begins, discuss it with the chair of the

department before enrolling, and ensure that a contract is signed at the beginning of the semester by both the student and the individual who will be supervising the internship on site. The student will be on the placement site for at least 135 hours, and the class should be completed in one academic semester. Prerequisite: P6201, Counseling Skills & Therapeutic Intervention.

P7202 Internship II

Continuation of P7201 and should, if at all possible, be at the same site where P7201 was completed. MDiv Chaplaincy students are required to have 1 unit of Clinical Pastoral Education as part of their Internship requirement.

P7801 Introduction to Military Chaplaincy; Military Families; War, Ethics & Religion

Part 1 introduces the student to the Military Chaplaincies and highlights the unique role that the chaplain fills within the Armed Forces. This mission, the duties and the responsibilities of the chaplain will be covered in detail. The Department of Defense Instructions and the regulations covering Chaplain Activities for each service will be introduced and surveyed. Part 2 covers the general pastoral functions of ministering to the military community in a diverse and pluralistic environment and surveys some of the special situations that the military chaplain is likely to encounter. These include deployment, reintegration, relationships, loss, and spiritual injuries of returning service members. Part 3 examines the philosophic and religious approaches to “ethical” prosecution of declared or undeclared wars and armed military engagements. It also explores the moral discord that individuals engaged in armed conflict may experience before, during and after the events.

P7802 The Experience of War; Wounded Warrior; Grief, Trauma, Loss and Recovery

Part 1 examines the general experience of engaging in war and the variety of experiences of individuals during and after the engagement. It will also explore the effects on contemporary service members that are caused by recurring deployments to combat zones. Part 2 explores the impact of invisible wounds upon the mind and the soul of our combat veterans, including an increased risk of suicide. Discusses ways of intervening with these invisible wounded in both mundane fashion and through using methods more in tune with Pagan beliefs. Part 3 explores the physical, emotional and spiritual aspects of grief, trauma and loss experienced by both combatants and non-combatants during times of war. Models of recovery and reintegration into society will also be explored.

P7803 Chaplaincy and Religious Freedom; Accommodation; Pluralistic Ministry

Part 1 addresses the challenging role of the military chaplain to both provide for the spiritual needs of all under his or her pastoral care and supervision and at the same time preserve and protect the Constitutional guarantees of the First Amendment. The policy of the Department of Defense and the Uniformed Services is that only military chaplains will provide spiritual services and programs to military members and other authorized personnel. However, not all faith groups have military chaplains endorsed by their religious group, or there may be insufficient numbers of chaplains to provide for a specific religious group. The Chaplains Corps provides for and accommodates those distinctive religious groups through exceptions to policy. Part 2 surveys the regulations, policies and procedures necessary to accommodate those groups. Part 3 considers the fine and sometimes conflicting line military chaplains must walk between their military and Constitutional responsibilities and their personal faith formation. Surveys some of the more prevalent conflicts and how individual chaplains have resolved them.

P7900 Thesis

The Master’s thesis provides the student an opportunity for mature integration of the head, heart and hands of Pagan Divinity Studies. Its main feature is the research and writing of a thesis focusing on the student’s central area of concern

while resourcing all other areas of study at Cherry Hill Seminary. Because this kind of work is more than merely academic, the final thesis should be a singular paper of 60-75 pages integrating: a) the theories, philosophies and theologies embraced by the student with; b) practices and; c) experiences which help the student make them real. Thesis guidelines may be found in the CHS online library in Moodle. Thesis guidelines may be found in the CHS online library in Moodle.

P7901 Thesis II

Optional continuation of T7900 Thesis I.

Theology and Religious History Courses

T5090 World Religions from a Pagan Perspective

An examination of the theologies and practices of the major world religions from a Pagan perspective. Broadly speaking, the fundamental spiritual options are Abrahamic, Dharmic, secular and Pagan. We want to ask: How do they differ from one another, what is a Pagan perspective and what does Paganism offer to the world's theological/spiritual forum that the other positions do not?

T5091 The Pagan Soul & the Spiritual Quest

Contemporary Pagans are often concerned with their own spiritual development, a concern rooted in long-standing traditions in the West of the soul's journey. This class will explore sources for understanding that journey. We will begin by exploring ancient Pagan philosophical concepts of the soul with readings on pre-Socratic philosophy and Neoplatonic philosophy. We will then move to a historical examination of the creation of the concept of the self in the modern world and end by looking at contemporary pagan and magical concepts of soul and self and how this shapes individual spiritual work. Students will be asked to engage in both intellectual reflection on historical materials and personal reflection.

T5280 American Spiritualities

At the end of the twentieth century, observers of American culture noted increasing numbers of people who self-identified as “spiritual, but not religious.” This growing population (one recent survey estimates that 72% of young adults now identify this way) values mysticism, solitude, and individual experience. This is not actually a new trend — its roots can be spotted as far back as the works of nineteenth century visionaries like Henry David Thoreau and Swami Vivekananda. The course will trace these roots forward through time and will examine the connections between selected American spiritual traditions and the role of Pagan spirituality in our personal lives and larger communities.

T5301 Understanding Ritual Experience

Because Pagans attend, observe, think about, and read and write about a lot of rituals, an examination of ritual and the ritual experience provides a more in-depth understanding of Pagan religion and spirituality. Students will encounter a robust field of discourse, open to the particular insights of ritual practitioners, exists in the academic fields of ritual studies and liturgical studies, review key ideas about ritual, explore writing by scholars in the social sciences, humanities, and theology. Through a substantial encounter with contemporary thought about ritual, students are challenged to use that thought to examine their own tradition, comparing their own understandings of ritual experience with those of other religious traditions.

T5560 History of Western Esotericism, Wicca and Contemporary Paganism

This course surveys the history and theology of Western esotericism and contemporary Paganism, including the Golden Dawn, Theosophy, Thelema, Wicca, and the flowering of contemporary Pagan traditions. Considers historical development, challenging and evaluating popular histories linking modern witchcraft to those persecuted as witches in early-modern Europe, the Salem witch trials, and those linking modern Paganism with the paganisms of the classical ancient world. This will enable students to both critique perceptions of the past and to understand the various ways in which the historical narratives are used by contemporary practitioners. Also considers themes in the development of Wicca and Paganism, such as environmentalism/back to the land movement, Jungian and transpersonal psychology, and the feminist consciousness movement.

T5700 Myths of Creation & Destruction

How do our myths tell us who we are and what is our place in the universe? How do we tell who we are through the stories we choose? Scholarly study of myths from around the world and through the ages, examined in historical context, from the Popol Vuh, Rig Veda, the Dogons and Oceania, to contemporary sacred stories such as the antediluvian Atlantis, the Apocalypse of Revelations, and the Big Bang theory. Students will examine the impact of myths on culture and history.

T5800 Sacred Texts

The course will survey sacred texts of the world religions, including the Hebrew Bible, the New Testament, the Quran, the Vedas, and more. Students in this course will study the historical and cultural contexts in which sacred texts developed, the canonical content of those texts, and the strategies for interpretation of and religious interaction with sacred texts. Students will also problematize the role of text within Pagan traditions.

T5998 Special Topics in Theology and Religious History

Study of a selected issue or topic of significance to Theology and Religious History. The topic will vary; however, the intent of the study is to develop a knowledge of, appreciation for, and skills needed in the complexities of Theology and Religious History. Materials for the study will be drawn from a wide variety of sources and may be interdisciplinary in nature.

T5999 Capstone Project (formerly Praxis)

Capstone Project is required for all Master's students and should be undertaken promptly after half the credits toward the degree have been completed. Capstone Project is worth one credit toward the degree, involving 45 hours of work. Capstone Project may include community service, field research, library research, creation of educational curricula, ritual design, creative writing, and more. Regardless of the nature of the project, the student will be expected to produce a written, visuals or audio summary of it that can be shared with other students and faculty in the Capstone Project classroom, where a contract between the student and faculty advisor outlining goals, responsibilities and meetings will be posted. Prerequisite: All required core courses.

T6270 Nature & Pagan Spirituality

Pagan spirituality is intertwined with an emerging re-examination of human relationships with the natural environment. This class provides students an opportunity to examine recent thought in eco-theology, environmental ethics, and nature spirituality as resources for reflection on Pagan spirituality, particularly as it concerns relationships with nature. Students will examine key writers, both those who write from a Pagan perspective and those who come from allied perspectives like deep ecology and ecofeminism, and reflect on the concepts developed by those writers. Students will assess the role of nature in their own ministry and that of their particular communities, and will produce critical and constructive writing on nature religion and nature spirituality. Prerequisite: None; C5141 Pagan Theology recommended.

T6475 Indigenous Religion & Culture

Survey of indigenous, place-based and land-based traditions that are not part of the contemporary Pagan movement. Native American religions, Afro-Caribbean traditions, shamanisms around the world, Hinduism, Australian aboriginal traditions, Judaism, more.

T6650 Paganism & the Body

Declaring that all acts of love and pleasure are the rituals of the Goddess, contemporary Pagans widely affirm the

sacredness of the body and of sexuality. Students will engage with theological and ethical writings around gender, sexuality, and the body from Pagan and allied perspectives, with special attention to relationships that are marginalized by mainstream society. The role of gender polarity and sex magic in the Western esoteric tradition and its influences on religious witchcraft will also be considered. Students will examine their conceptions of gender and sexuality and develop their own theologies of the body. Students will also consider ministering to a sexually diverse Pagan community. Prerequisite: None; C 5141: Introduction to Pagan Theology recommended.

T6805 Goddess Traditions

A study of Goddess images and traditions in a variety of cultures from prehistory to the modern age, including history, values, beliefs, practices, and ethical systems associated with ancient Goddess imagery for a contemporary society.

T6806 Pagan Reconstructionisms

Roma, Slavic, Kemetic, Hellenic, Minoan and more. Some contemporary Pagans do their best to strictly reconstruct what is known of pre- and non-Abrahamic religions. Others draw inspiration from past traditions, or blend the past with new spiritual practices. Such spiritual creativity and bricolage characterizes the 21st century religious landscape, as modern people continue to seek wisdom of the past while exploring their own ways of making meaning.

T6808 Heathenry

Heathenry can be seen as a development of North European and Eurasian understandings of the relationships between humans, place, and other-than-human people or wights of land, rivers, houses, gardens and so forth. The focus in this course is on Britain and North Europe, though the worldview shares much with accounts of indigenous animist religions elsewhere. We will discuss the re-emergence of seidr, its descriptions in lore and historic and present-day performance, and we will investigate understandings of “ancestors” conceptualized as those who have involved themselves with that landscape on which today’s practitioners now dwell.

T6855 Druidry and the Celtic World View

The history of the Celtic people is long and extraordinary, spanning many different territories, political groups, religions, even languages. The course examines several important texts in the Celtic literary tradition, looking for instances of central ideas in the iron-age Celtic world view, such as the transience of things, the dominance of fate and destiny, the use of poetry for magical purposes, the roles of the gods, and the nature of a heroic and magical life.

T6990 Independent Study

Directed study in a special area of interest by instructor permission only. Work may include writing in response to readings; discussion of material with instructor; field research; creation and presentation of rituals, classes, etc.; or other appropriate activities. Culminates in a project or research paper. Students may contact instructors with a study proposal, including reading list, project idea, and reference from a past CHS instructor indicating student's readiness for one-on-one directed study. If the proposal is accepted, the instructor will assist the student in constructing a schedule and appropriate requirements; the resulting syllabus will be approved by the department head. Directed study should involve approximately 135 hours of work. Prerequisites: All six Core courses must be completed.

T7201 Internship I

Three- unit, one semester course for majors in the Master of Divinity Degrees in Pastoral Counseling and Chaplaincy constitutes the first half of the required six-unit internship. Students are required to seek their own community placement in either a clinical or pastoral setting well before the semester begins, discuss it with the chair of the

department before enrolling, and ensure that a contract is signed at the beginning of the semester by both the student and the individual who will be supervising the internship on site. The student will be on the placement site for at least 135 hours, and the class should be completed in one academic semester. Prerequisite: P6201, Counseling Skills & Therapeutic Intervention.

T7202 Internship II

Continuation of P7201 and should, if at all possible, be at the same site where T7201 was completed. MDiv Chaplaincy students are required to have 1 unit of Clinical Pastoral Education as part of their Internship requirement.

T7301 Pagan Apologetics

Paganism, as a belief system, is most congruent with both current scientific advancements and the psyche of the human being as they are understood today. Archaeological and textual evidence will be examined that will suggest that paganism of whatever genre is the indigenous religion of human beings on planet earth. This course lays the foundations from early tribal belief systems to the establishment first pagan societies in the Mediterranean, Near East, Middle East, Orient and the Americas and explores some of the common beliefs across these societies. Prerequisite: P/T5090, World Religions from a Pagan Perspective, or permission of instructor.

T7900 Thesis

The Master's thesis provides the student an opportunity for mature integration of the head, heart and hands of Pagan Divinity Studies. Its main feature is the research and writing of a thesis focusing on the student's central area of concern while resourcing all other areas of study at Cherry Hill Seminary. Because this kind of work is more than merely academic, the final thesis should be a singular paper of 60-75 pages integrating: a) the theories, philosophies and theologies embraced by the student with; b) practices and; c) experiences which help the student make them real. Thesis guidelines may be found in the CHS online library in Moodle. Thesis guidelines may be found in the CHS online library in Moodle.

T7901 Thesis II

Optional continuation of T7900 Thesis I.

A Final Word

Cherry Hill Seminary strives to offer the best Pagan education possible, with a caring professionalism. As we establish and refine our programs, no doubt we will encounter issues not yet addressed, discover editing mistakes, and realize that some procedures need additional changes in order to function smoothly. We appreciate your understanding during this time of growth and change, and always welcome your feedback and suggestions.

Appendix A: Policies

Nondiscrimination Policy

Cherry Hill Seminary prohibits discrimination on the basis of race, color, religion, creed, sex, age, marital status, national origin, mental or physical disability, political belief or affiliation, veteran status, sexual orientation, gender identity and expression, and any other class of individuals protected from discrimination under state or federal law in any aspect of the access to, admission, or treatment of students in its programs and activities, or in employment and application for employment. Furthermore, Seminary policy includes prohibitions of harassment of students and employees, i.e., racial harassment, sexual harassment, and retaliation for filing complaints of discrimination.

The Executive Director, or designee, is also the Title VI, Title IX, Section 504, and Americans with Disabilities Act Coordinator for the campus. This person will provide information about the Seminary's obligations with respect to the provisions of nondiscrimination statutes, including information about the requirement to provide program accessibility for persons with disabilities.

The Seminary is committed to compliance with Title VI and Title VII of the Civil Rights Act of 1964, Title VI of the Civil Rights Act of 1968, Title I and Title II of the Civil Rights Act of 1991, the Equal Pay Act of 1963, Executive Order 11246 (1965), Title IX of the Education Amendments of 1972 and its regulations found at 34 C.F.R. part 106, Sections 503 and 504 of the Rehabilitation Act of 1973, the Americans with Disabilities Act of 1990, the Vietnam-era Veterans Readjustment Act of 1974, the Age Discrimination Act of 1975, the Age Discrimination in Employment Act of 1967, the Family and Medical Leave Act of 1993, and with [Massachusetts General Laws, Chapters 151B, 151C, and Chapter 149, all as amended.] Inquiries regarding federal laws may also be directed to: Office for Civil Rights, U.S. Department of Education, J.W. McCormack Bldg., Room 701, 01-0061, Boston, MA 02109-4557; tel. (617) 223-9662; TTY: (617) 223-9695 and to U.S. Equal Employment Opportunity Commission, John F. Kennedy Federal Building, 475 Government Center, Boston, MA 02203; tel. (617) 565-3200 or 1-800-669-4000; TTY: (617) 565-3204 or 1-800-669-6820. Inquiries regarding state laws may be directed to: [Massachusetts Commission Against Discrimination, 436 Dwight Street, Suite 220, Springfield, MA 01103; tel. (413) 739-2145; TTY: (617) 994-9196.]

By signing you confirm that you have read and will abide by the Cherry Hill Seminary Nondiscrimination Policy.

Signature

Date

Sexual Harassment Policy

Cherry Hill Seminary, Inc., does not tolerate sexual, racial, religious or ethnic harassment of any kind. In compliance with Title VII of the Federal Civil Rights Act of 1964, (42 United State Code Section 2000C et seq.), it is a violation for any employee or student, male or female, to sexually harass another student or employee. Cherry Hill Seminary is committed to providing a workplace free from this unlawful conduct. Every faculty member, mentor, and administrator is responsible for promptly responding to, or reporting any complaint or suspected acts of sexual harassment.

What is "sexual harassment?"

Sexual harassment is a form of sex discrimination and means unwelcome sexual advances, requests for sexual favors, and other verbal or physical conduct of a sexual nature when;

1. Submission to that conduct is made either explicitly or implicitly a term or condition of employment and grade evaluation; or
2. Submission to or rejection of such conduct by an individual is used as a component of the basis for employment or grading decisions affecting that individual: or
3. The conduct has the purpose or effect of substantially interfering with an individual's work or scholastic performance or creating an intimidating, hostile, or offensive working or scholastic environment.

It is unlawful for an individual or organization to retaliate against an employee or student for filing a complaint of sexual harassment or for cooperating in an investigation of sexual harassment.

Examples of sexual harassment include, but are not limited to the following, when such acts or behavior come with one of the above definitions:

- Either explicitly or implicitly conditioning any term of employment or student progress on the provision of sexual favors;
- Unwanted touching or grabbing a sexual part of an employee's or student's body;
- Touching or grabbing any part of a student's or employee's body after that person has indicated, or it is known, that such physical contact was unwelcome;
- Continuing to ask a student or employee to socialize on or off-duty when that person has indicated s/he is not interested;
- Displaying or transmitting sexually suggestive pictures, objects, cartoons, or posters if it is known or should be known that the behavior is unwelcome;
- Continuing to write sexually suggestive notes or letters if it is known or should be known that the person does not welcome such behavior;
- Referring to or calling a person a sexualized name if it is known or should be known that the person does not welcome such behavior;
- Regularly telling sexual jokes or using sexually vulgar or explicit language in the presence of a person if it is known or should be known that the person does not welcome such behavior;
- Retaliation of any kind for having filed or supported a complaint of sexual harassment (e.g. ostracizing the person, pressuring the person to drop or not support the complaint, adversely altering the person's duties or work environment, etc.);

- Derogatory or provoking remarks about or relating to a person's sex or sexual orientation;
- Harassing acts or behavior directed against a person on the basis of his or her sex or sexual orientation;
- Off-duty conduct which falls within the above definition and affects the work environment.

In the event Cherry Hill Seminary receives a complaint of sexual harassment, or otherwise has reason to believe that sexual harassment is occurring, we will take all necessary steps to ensure that the matter is promptly investigated and addressed. We are committed, as required by law, to take action if we learn of potential sexual harassment, even if the aggrieved student or employee does not wish to formally file a complaint.

Every staff member is responsible for promptly responding to, or reporting, any complaint or suspected acts of sexual harassment. Staff members should report to: Candace Kant, who is designated to receive such complaints or reports, or to Holli Emore, Executive Director. Failure by a staff member to appropriately report or address such sexual harassment complaints or suspected acts shall be considered a violation of this policy.

Care will be taken to protect the identity of the person with the complaint and of the accused party or parties, except as may be reasonably necessary to successfully complete the investigation. It shall be a violation of this policy for an employee or student who learns of the investigation or complaint to take any retaliatory action which affects the working or study environment of any person involved in this investigation.

If the allegation of sexual harassment is found to be credible, this organization will take appropriate corrective action. The organization will inform the complaining person and the accused person of the results of the investigation and what actions will be taken to ensure that the harassment will cease and that no retaliation will occur. Any employee, supervisor, or agent who has been found by the employer to have harassed another employee will be subject to sanctions appropriate to the circumstances, ranging from a verbal warning up to and including dismissal.

If the allegation is not found to be credible, the person with the complaint and the accused person shall be so informed, with appropriate instruction provided to each, including the right of the complainant to contact any of the state or federal agencies identified in this policy notice.

Any student or employee who believes that s/he has been the target of sexual harassment, or who believes s/he has been subjected to retaliation for having brought or supported a complaint of harassment, is encouraged to directly inform the offending person or persons that such conduct is offensive and must stop. If the person does not wish to communicate directly with the alleged harasser or harassers, or if direct communication has been ineffective, then the person with the complaint is encouraged to report the situation as soon as possible to Valerie Cole, Pastoral Counseling Department Chair (who is designated to receive such complaints or reports), or to Holli Emore, Executive Director, or to her or his supervisor at Cherry Hill Seminary. It is helpful to an investigation if the student or employee keeps a diary of events and the names of people who witnessed or were told of the harassment, if possible.

If the complainant is dissatisfied with Cherry Hill Seminary's action, or is otherwise interested in doing so, s/he may file a complaint by writing or calling any of the following state or federal agencies:

1. South Carolina Human Affairs Commission, 2611 Forest Drive, Post Office Box 4490, Columbia, S.C. 29240, 803-737-7800, Fax: 803-253-4191. Complaints should be filed within 300 days of the adverse action.

2. Equal Employment Opportunity Commission, 1 Congress Street. Boston, MA 02114, tel: (617) 565-3200 (voice), (617) 565-3204 (TDL)). Complaints must be filed within 300 days of the adverse action.

Each of these agencies can conduct impartial investigations, facilitate conciliation, and if it finds that there is probable cause or reasonable grounds to believe sexual harassment occurred, it may take the case to court. Although employees are encouraged to file their complaint of sexual harassment through this employer's complaint procedure, an employee is not required to do so before filing a charge with these agencies.

In addition, a complainant also has the right to hire a private attorney and to pursue a private legal action in state court within 3 or 6 years, depending on the type of claims raised.

A copy of this policy will be provided to every employee, and extra copies will be available in the Cherry Hill Seminary's administrative office at P.O. Box 5405, Columbia, SC 29250-5405, or at www.cherryhillseminary.org.

Reasonable accommodations will be provided for persons with disabilities who need assistance in filing or pursuing a complaint of harassment, upon advance request.

By signing you confirm that you have read and will abide by the Cherry Hill Seminary Sexual Harassment Policy.

Signature

Date

Information Privacy Policy

The web site of Cherry Hill Seminary, Inc., is www.cherryhillseminary.org.

Our postal address is
P.O. Box 212804, Columbia SC 29221

We can be reached via e-mail at CHS@cherryhillseminary.org or you can leave a telephone message at 888.503.4131.

For each visitor to our Web page, our Web server automatically recognizes no information regarding the domain or e-mail address. We collect no information on consumers who browse our Web page.

With respect to cookies: We do not set any cookies. If you do not want to receive e-mail from us in the future, please let us know by sending us e-mail at the above address.

If you supply us with your postal address on-line you may receive periodic mailings from us with news, announcements or upcoming events. If you do not wish to receive such mailings, please let us know by calling us at the number provided above, e-mailing us at the above address, or writing to us at the above postal address. Please provide us with your exact name and address. We will be sure your name is removed from our list.

Persons who supply us with their telephone numbers on-line will only receive telephone contact from us with information regarding orders they have placed on-line, e.g., admission applications or class registration.

With respect to Ad Servers: We do not partner with or have special relationships with any ad server companies.

Upon request we will provide site visitors with access to any contact information (e.g., name, address, phone number) that we maintain about them. Individuals can access this information by e-mailing us at the above address, or writing to us at the above postal address.

Upon request we will correct inaccuracies in your contact information. Send corrections to us at the above email address, by calling us at the above telephone number, or by writing to us at the above postal address.

With respect to security: We have appropriate security measures in place in our physical facilities to protect against the loss, misuse or alteration of information that we have collected from you.

If you feel that this site is not following its stated information policy, you may contact us at the above addresses or phone number, The Federal Trade Commission by phone at 202.FTC-HELP (202.382.4357) or electronically at <http://www.ftc.gov/ftc/complaint.htm>.

Research with Human Subjects Policy

Cherry Hill Seminary (CHS) is committed to safeguarding the rights and welfare of individuals participating as subjects in research. These safeguards are based on the ethical principles listed in the Belmont Report: Respect for Persons, Beneficence, and Justice. At CHS, the Human Subjects Committee (HSC) serves as the Institutional Review Board (IRB) for reviewing research applications involving human subjects. The primary mission of the HSC is to ensure compliance with human subjects protocol and adherence to professional ethical standards.

Review and approval by the HSC is required before starting research involving human subjects.

The following types of research do not require a human subjects review:

- **Unidentifiable/de-identified or coded private information or specimens.**

These do not need IRB approval if the researcher(s) cannot readily ascertain the identities to whom the data or samples belong.

Coded information or specimens that are not individually identifiable to the researcher are not considered human subjects research if:

- a. The private information or specimens were not collected specifically for the proposed research through interaction or intervention with living individuals **and**
- b. The researcher cannot identify the individual(s) because the investigators do not have the key to the coded information, there are IRB policies or procedures in place for a repository or data management center that prohibit sharing the key to the coded private information, or there are other legal requirements prohibiting the release of the key to the investigators, until the individuals are deceased.

- **Certain course activities might seem to be research but do not meet the federal government's definition of research.**

These are activities that are intended to teach research methodologies and are not research. Any course papers, reports, or comprehensive projects that will not be published in any form and if **all** of the following categories are true do not need IRB review.

- a. The project is limited to surveys/interviews/observations of public behavior directly related to topics that are being studied in the course.
- b. These surveys/interviews/observations contain no personal questions (for example: no questions about sexual behavior or attitudes, drug use, criminal or illegal activity, grades, medical history) or any other information that could stigmatize, hurt, or put at risk, any individual.
- c. There is no identifying information that could link an individual with collected data so that the linkage could harm their reputation, employability, financial standing, or place them at risk for criminal or civil action.
- d. The participants in the project are not from a vulnerable population or protected category. These subjects include, but are not limited to, pregnant women, minors, prisoners, elderly persons, and the cognitively impaired.
- e. The collected data will not leave the classroom setting.

If one or more of these categories are **not** true, the research project **will** need to engage the IRB process.

Questions may be addressed to the Academic Dean at CHS@cherryhillseminary.org.

Code of Ethics for Student Recruitment Personnel

A recruitment representative is someone who enrolls prospective students, including, but not limited to, telephone marketers, enrollment advisors, and admission representatives.

- A. As a student recruitment representative of an accredited distance education institution, I recognize that I have certain responsibilities toward students, the public, and my institution. To fulfill these responsibilities, I pledge adherence to this Code of Ethics.
- B. I will observe fully the Accreditation Standards, rules, policies, procedures, and guidelines established by my institution, the Distance Education Accrediting Commission, the State Education Agency, and other legally authorized agencies.
- C. I will adhere to high ethical standards in the conduct of my work, and to the best of my ability, will:
 - 1. Observe fully the rights of all applicants and commit no action that would be detrimental to any applicant's opportunity to enroll because of race, sex, color, creed, or national origin.
 - 2. Never knowingly make any false or misleading representation to any applicant nor use any coercive practices in presenting information.
 - 3. Enroll applicants only in the course or courses in which they have expressed their interest, provided they meet the qualifications and standards established by my institution for enrollment.
 - 4. Provide applicants only with information authorized by my institution regarding the occupational opportunities for graduates, and never make claims guaranteeing employment, job promotion prospects or income increases to an applicant.
 - 5. State accurately and clearly to prospective students the approvals, accreditation, business and employer recognition, and course acceptance accorded to my institution.
 - 6. Provide only full and accurate information on the transferability of academic credits and acceptance of degrees or credentials by other educational institutions, and disclose affirmatively the fact that the acceptance of credits and degrees is entirely the prerogative of the receiving institution and acceptance cannot be guaranteed.
 - 7. Provide prospective applicants only complete and accurate information on the total financial obligation they will be incurring prior to accepting their enrollment application.
 - 8. Provide students prior to enrolling complete and accurate information about financing options for students and answer any questions.

9. Never use tuition assistance available from a governmental agency or other source as the primary inducement for enrollment.
10. Refrain at all times from making any statement or inference that might falsely impugn the integrity or value of any other institution, method of training, or profession.
11. Discharge faithfully, and to the best of my ability, all of the duties and obligations and procedures established by my institution for my position and know all of my obligations and obligations as an institutional representative.
12. Reflect at all times the highest credit upon myself, my institution, and the field of distance education and always strive to enhance the reputation of my profession through my conduct as an institutional representative.

Signature _____ Date _____

Acceptable Use of Cherry Hill Seminary Electronic Communications Systems and Services

1. Cherry Hill Seminary's electronic communications systems and services are essential resources provided to the Seminary community in a manner consistent with the Seminary's official recognition of the formal role that the community plays in fulfilling Cherry Hill Seminary's mission of providing quality higher education and practical training in Pagan ministry.
2. To this end, the Cherry Hill Seminary uses, supports and provides electronic communications systems and services for telecommunications, mail, education, and research conducted by faculty, students, administrators, and officially recognized partners and supporters, whether acting individually or collectively, in their respective roles as a part of the Seminary community on behalf of Cherry Hill Seminary.
3. The Seminary further recognizes that such a diverse community of faculty, students, administrators, and officially recognized partners and supporters have a clear need to freely and creatively utilize these electronic communications systems and services in the conduct of their business with and on behalf of the Seminary, and that these users additionally have the right to expect fair and equitable access to these resources in an atmosphere of mutual respect, professionalism and academic excellence.
4. In order to ensure such fair and equal access to and use of these essential resources by the entire Seminary community, and specifically without compromise to the exercise of academic freedom, all users are prohibited from utilizing Cherry Hill Seminary's electronic communications systems and services for any purposes not specifically related to the fulfillment of their individual responsibilities related to conducting the Seminary's business.

5. In this regard, users are specifically prohibited from utilizing Cherry Hill Seminary's electronic communications systems and services not only for exclusively personal purposes but also for any unlawful, unethical or unprofessional purpose or activity. Examples of prohibited use include but are not limited to:
 - a. Solicitation or commercial activities unrelated to the mission of the Seminary. This includes soliciting, promoting, selling, marketing or advertising products or services (e.g. consulting services) or other revenue-generating private business operations for personal financial benefit. Disputes regarding a commercial activity's relatedness to mission of the Seminary shall be conclusively resolved by the Executive Director or designee.
 - b. Transmission of threats, harassment or defamation.
 - c. Download or distribution of material or programs that could be deemed harmful to the Seminary's electronic communications systems or services.
 - d. Violations of any state or federal laws, or any applicable Seminary policy or regulation, including but not limited to, Non-Discrimination Policy, Sexual Harassment Policy, Information Policy, Academic Honesty and Student Conduct, and Student Confidentiality.
 - e. Violation of software licensing agreements.
 - f. Intentional damage to equipment, software or data.
6. When there is reason to believe that a violation of this policy has occurred, an investigation shall be conducted under the guidance of the Executive Director or designee. Investigating officials shall examine charges of violations with due respect for individual privacy, the security of other users and the rights of due process, and are encouraged to proactively consider, in consultation with the Seminary's executive and administrative leadership, the option of the Seminary's consultation with legal counsel.
7. User access to electronic communications systems and services may be temporarily suspended while an investigation is being conducted, with prior written notification by the Executive Director or designee to the individual(s) whose access is being affected, as well as to the appropriate dean, chair or other appropriate Seminary official.
8. The Executive Director or designee, after consultation with the Seminary's executive and administrative leadership, shall have the sole authority to make a final decision on what, if any, action on the part of the Seminary will be taken.

9. Violations of Seminary policy may result in formal sanctions, including but not limited to, limitation or revocation of access rights and/or reimbursement to the Seminary for any expense related to the violation, including costs associated with the detection and investigation of the violation, as well as from the violation itself. Violation of applicable statutes may result in criminal prosecution.
10. Regardless of whether the investigation's findings warrant Seminary action, an explanation of the causal events shall be reported, in writing, to the appropriate dean, chair or other appropriate Seminary official, along with a summary of whatever course of action is decided upon by the Executive Director or designee. This report will also include what final disposition will be taken in regard to reinstatement or modification to, or revocation of, access to the Seminary's electronic communications systems and services by the individual(s) involved in the investigation.

Appendix B: Student Forms

All forms are found on our main web site (www.cherryhillseminary.org) under For Students/Materials, including those copied below.

Apply To a Degree or Certificate Program

11/17/2019

| Apply To A Degree or Certificate Program

Apply To A Degree or Certificate Program

Class Registration for Non-Matriculated Students

FirstName *

LastName *

StreetAddress *

City

State

Zipcode or Country Code if not U.S.

Country *

Email

Preferred Phone

Date of Birth

Highest level of education completed

Applying to pursue:*

Degree Major or Certificate Name (from StudentCatalog)

High School

Did you graduate?

- ☐ Yes
☐ No

Date of high school graduation

College

Please list ALL colleges you have attended by name, give address, date started to date finished, and any degree earned.

Background A

- ☐ Yes
☐ No
☐ Other

Have you ever been charged with a violation of the law which resulted in probation, community service, a jail sentence, or the revocation of suspension of your driver's license?

Background B

- ☐ Yes
☐ No
☐ Other

Have you ever been charged with or subject to disciplinary action for scholastic or any other type of misconduct at any educational institution?

Upload your essay


Drop a file here
or click to
upload
Maximum upload size:
2.1MB

Upload your resume or cv. Include professional, volunteer and Pagan/ spiritual experience


Drop a file here
or click to
upload
Maximum upload size:
2.1MB

Date

How did you learn about Cherry Hill Seminary?

Do you consider yourself to be of Hispanic / Latino / Spanish origin?

- ☐ Yes
☒ No

Please also select one or more of these racial categories to describe yourself.

- ☐ American Indian
☐ Alaska Native
☐ Asian
☐ Black
☐ African American
☐ Native Hawaiian
☐ Pacific Islander
☐ Caucasian

11/17/2019

| Apply To A Degree or Certificate Program

Signature and Date

I hereby certify that the above information provided by me is true and correct. I understand that if I misrepresent information or provide untruthful information, it can result in my acceptance to the Cherry Hill Seminary being declared null and void. I agree to abide by the rules and procedures of Cherry Hill Seminary. I hereby authorize any educational institutions which I have previously attended and officials of those institutions, to release academic, disciplinary, and any other records and to discuss these records with appropriate officials at Cherry Hill Seminary. I accept the right of Cherry Hill Seminary to exercise academic sanctions against me in the event that I fail to meet the academic standards established by Cherry Hill Seminary. Typing my name below acts as my signature.

Untitled

☐ I'm not a robot

reCAPTCHA

Submit

Register as a Non-Degree Student

11/17/2019

| Register As A Non-Degree Student

Register As A Non-Degree Student

Class Registration for Non-Matriculated Students

FirstName *

LastName *

StreetAddress *

City

State (choose from drop- down menu)

Zipcode

Country *

Email

Preferred Phone

Date of Birth

HighestLevelofEducation Completed

Do you consider yourself to be of Hispanic / Latino / Spanish origin?

- ☐ Yes
☒ No

Please also select one or more of these racial categories to describe yourself.

- ☐ American Indian
☐ Alaska Native
☐ Asian
☐ Black
☐ African American
☐ Native Hawaiian
☐ Pacific Islander
☐ Caucasian

I hereby certify that the above information provided by me is true and correct. I understand that if I misrepresent information or provide untruthful information, it can result in my acceptance to the Cherry Hill Seminary being declared null and void. I a

- ☐ Yes
☐ No

Signature and Date

Untitled

https://www.cherryhillseminary.org/wp-admin/admin-ajax.php?action=frm_forms_preview&form=6li3ry

1/2

Course Evaluation by Student

11/17/2019

| Course Evaluation (by student)

Course Evaluation (by student)

Gather address info

StudentName

First

Last

Semester and Year

How effective was the syllabus in clearly communicating the course goals?

Very effective



How closely was the syllabus followed during the course?

To the letter



How well did the assignments meet the 45- hour/ credits standard? If this was an Insight class, did you think the workload was appropriate?

How well did the assignments support the course goals?

Very Effective



How effective were the course materials and resources in meeting the course goals?

Very Effective



How effective were the teaching methods and interactive components in meeting the course goals?

Very Effective



How effective were the technologies used in meeting the course goals?

Very Effective



How well did the academic portion of this course support your practice of professional Pagan ministry?

Very Effective



How well did this course meet your personal goals and objectives for this experience?

https://www.cherryhillseminary.org/wp-admin/admin-ajax.php?action=frm_forms_preview&form=frmprocontact3

1/4

Very Effective ▼

How well did this course support and integrate into your personal spiritual formation and development?

Very Effective ▼

How useful was this course in your roles beyond professional Pagan ministry and in your other communities (both real and online)?

Very Useful ▼

Would you recommend this course to peers?

Always ▼

Comments regarding your course experience:

Instructor Name

How effective was the instructor in communicating the course material?

Very Effective ▼

Did the instructor demonstrate a commitment to teaching and student learning?

Always ▼

Did the instructor clearly communicate any changes in the syllabus or course material in a timely way?

Always ▼

Did the instructor clearly explain grading and evaluation processes?

Always ▼

Did the instructor use appropriate grading and evaluation processes?

Always ▼

Was the instructor available for feedback and/or extra help if needed?

Always

Was the instructor open to a wide range of perspectives and respectful of differences?

Always

Would you recommend the instructor to peers?

Always

Comments regarding the instructor:

How effective was this course in exploring and developing the CHS core values of engaging community, encouraging individual and spiritual autonomy and responsibility, respecting diversity, valuing scholarship, honoring the sacredness of the Earth, and promoting service?

Very Effective

Comments regarding CHS core values:

Any additional comments:

What has been done in this course that has helped you?

What was done in this course that was not helpful?

11/17/2019

| Course Evaluation (by student)

If you could change only one thing about this course that would make it more helpful to you, what would it be?



I'm not a robot

reCAPTCHA
[Privacy - Terms](#)

Submit

Program Leave of Absence Request

Program Leave of Absence Request

Gather address info

FirstName

First

Last

Email

Country

Phone

Irequesta LeaveofAbsence for the following reason(s):

Date LOA Begins - Date LOA Ends

☐

I'm not a robot

reCAPTCHA
Privacy-Terms

Submit

Course Transfer Evaluation Request

Student Name _____ Contact information _____

Name/# of Course	Institution/Year	Syllabus	Grade/Credits	Transfer as:	Comments
1.					
2.					
3.					
4.					
5.					
6.					
7.					
8.					
9.					

Please note that all classes will be evaluated based on CHS requirements, some of which are listed below. No class already credited toward a degree will be considered for transfer. Additional documentation may be required in certain instances.

- Copy of syllabus
- B or better grade, and compatible grading policy
- Institution which provided the course
- Teacher's credentials (terminal degree)
- Hours of student effort (must be 45 per credit hour granted)
- Level of academic excellence, including difficulty, expectations, goals and outcomes
- Comparability to CHS offerings and Pagan ethos

Appendix C: The Master's Thesis at Cherry Hill Seminary

What is a Master's Thesis? The master's thesis is a research paper written under the direction of a faculty advisor. It consists of carefully documented original research. It is approximately 12,000 to 20,000 words in length, or 40 to 80 pages, however, the length will vary depending upon the topic and the method used. It is normally considered to be the culmination of graduate studies, written after coursework is completed. The thesis is an opportunity to demonstrate expertise in the chosen research area.

When should I start thinking about the thesis? Ideally you should have an idea of what your research interests are at the time that you matriculate into Cherry Hill Seminary, however, many students find a research interest as they take their coursework. As you progress in your coursework your ideas regarding the thesis may be refined and enhanced or changed. At the latest, you should have a clear idea of your topic by the end of the semester before the one in which you will complete the thesis.

Who can be my advisor? Any Cherry Hill Seminary faculty member who teaches in the graduate program can be your thesis advisor. It is your responsibility to find an advisor. Your advisor will provide general guidance, and will help you refine your topic and develop your argument. Most students choose faculty members they have worked with in courses. Thesis advisors must be approved by the Department Chair and the Academic Dean, along with the thesis topic. *(Many graduate programs do require a 3-member thesis committee – the one I did require this – do we want to go this direction, or stick with a single faculty advisor?)*

Who should write one? Students in the following degree programs are required to write a thesis:

M.Div. – PCC

M.Div. – MAL

M.Div. - TRH

MPS - Master of Pagan Studies

When do I start? Although you may begin at any time, it is suggested that you write the thesis towards the end of your coursework or after your coursework is completed. Some students find that they can focus their writing in course work towards the thesis, that is, each paper might serve as a chapter in the thesis.

How much time should I expect to spend? Theses generally are written over the course of one or two semesters. Each student is different and should plan accordingly. Keep in mind that you must enroll in thesis each semester that you are working on it. You must maintain continuous enrollment while working on the thesis.

Should/must I take the writing class as part of my thesis? It is highly recommended that you take the writing class prior to embarking on writing your thesis.

Are there guidelines? Guidelines for the thesis may be found in the online library which is in Moodle.

What is the process?

1. Decide on a research topic.
2. Write a one to two paragraph abstract of the project, a preliminary bibliography, and an outline of the paper.
3. Upon consultation with your department chair, select a thesis advisor. *(Should we have a more formal process here – forms such as “application for approval of Master's Thesis Topic” and “Approval of Thesis Advisor”?)*

4. Discuss with your advisor your schedule and your method of communication. You should submit a draft of each chapter of your thesis to your advisor for comments. Be sure to keep in mind that your advisor must have adequate time to review your drafts with comments and that you must have time to incorporate the comments. Keep in mind that your advisor may request substantial changes in the thesis. It is your responsibility to be sure that the final copy had no spelling and grammatical errors. Be sure to consider in which semester you want to graduate.
5. Incorporate the appropriate formatting as found on page ???? of the handbook (*or, we could put this in here – which style of documentation is preferred? For example:*
 - Paper 8 1/2 by 11 inches
 - White
 - Text begins 1 – ¼ inches from top and left side of paper
 - Bottom and right side margins are 1 inch
 - Page numbers are in upper right hand corner
 - All pages are numbered except the title page and the advisor approval page
 - Preliminary pages (table of contents, dedication, acknowledgements, abstract) are numbered with lower case Roman numerals beginning with i.
 - The main text is numbered consecutively beginning with Arabic numeral 1.
 - 12-point font
 - The main text is double spaced.
 - Footnotes and endnotes are single spaced.
 - Include advisor page for signature. This may be a single sheet that contains the word APPROVED, followed by your advisor's signature, advisor's title, and date signed. It should not be double sided with the title page or any other page.
 - Include the abstract
 - Supplementary materials such as questionnaires may be put in appendices
 - Include a bibliography
 - Include footnotes (*do we prefer end notes?*)
 - (*What style is preferred? – MLA, Chicago, APA?*)
 - Order of document
 - * Title page
 - * Approval page
 - * Abstract
 - * Acknowledgements (optional)
 - * Dedication (optional)
 - * Preface (optional)
 - * Table of Contents (everything from abstract to CV)
 - * List of Tables (if appropriate)
 - * List of Figures (if appropriate)
 - * Main body of text
 - * Appendix
 - * Bibliography
 - * Author's CV

